
iOS App for WiFi Configure

Version 1.0.0



Introduction

This application used together with Cyntec NNN40 platform, and it allows user to quickly set up the device to their WiFi network. There are 4 features as follows:

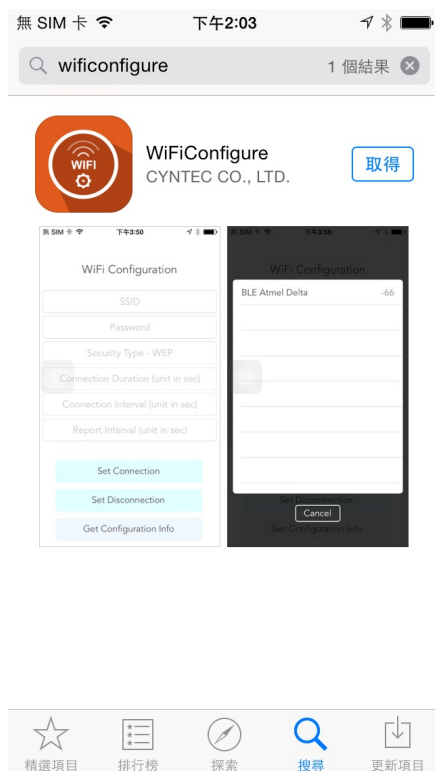
Features -

- Discover BLE devices and get the RSSI value
- BLE Connect/Disconnect function
- Configure the WiFi connection/disconnection information to Cyntec's platform via BLE connection
- Read current state of Cyntec's platform via BLE connection

Installation

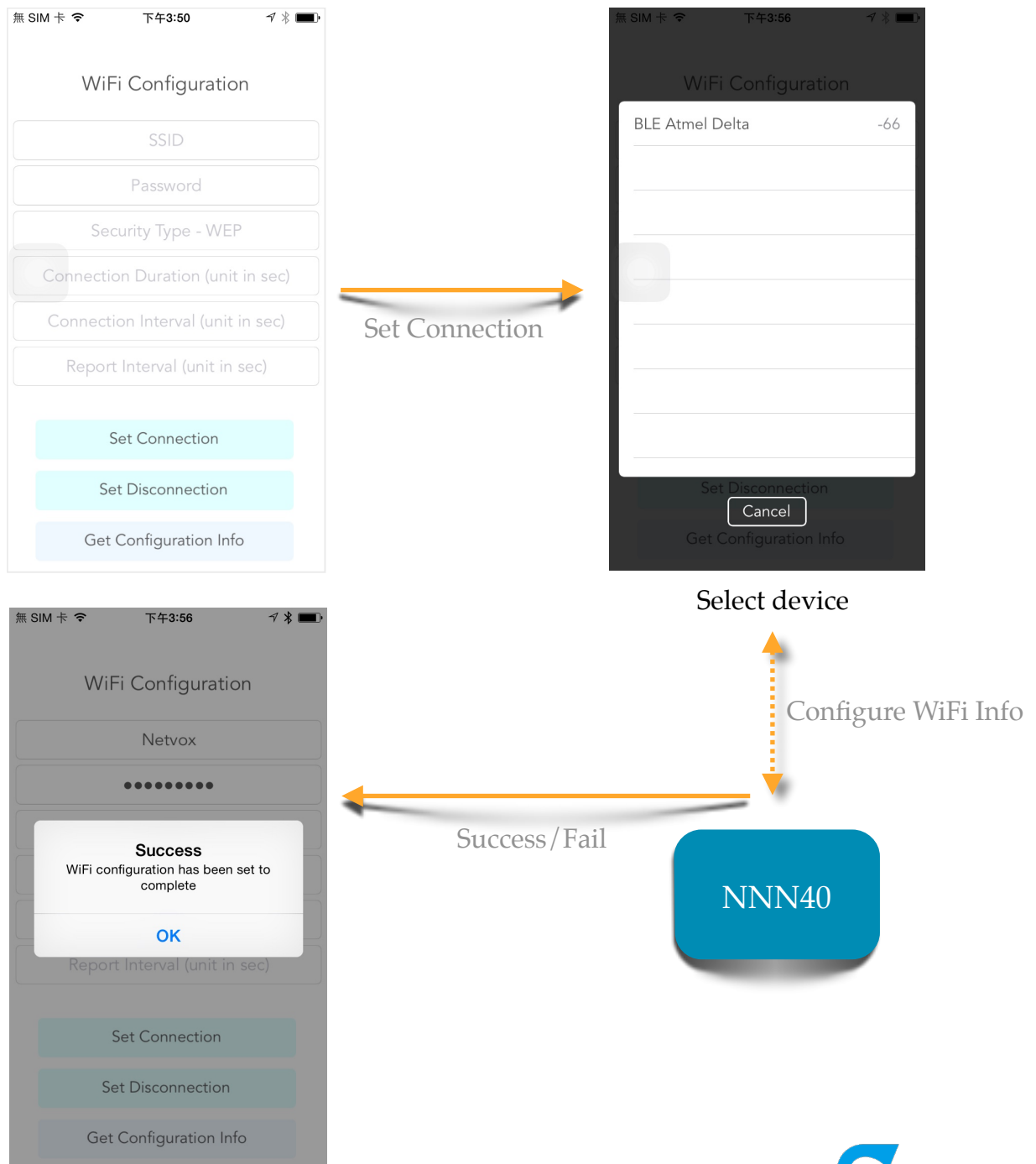
You can download and install the application from the **App Store**.

- App Name - WiFiConfigure
- App Version - 1.0.0
- iOS Version - iOS 7.0 and later

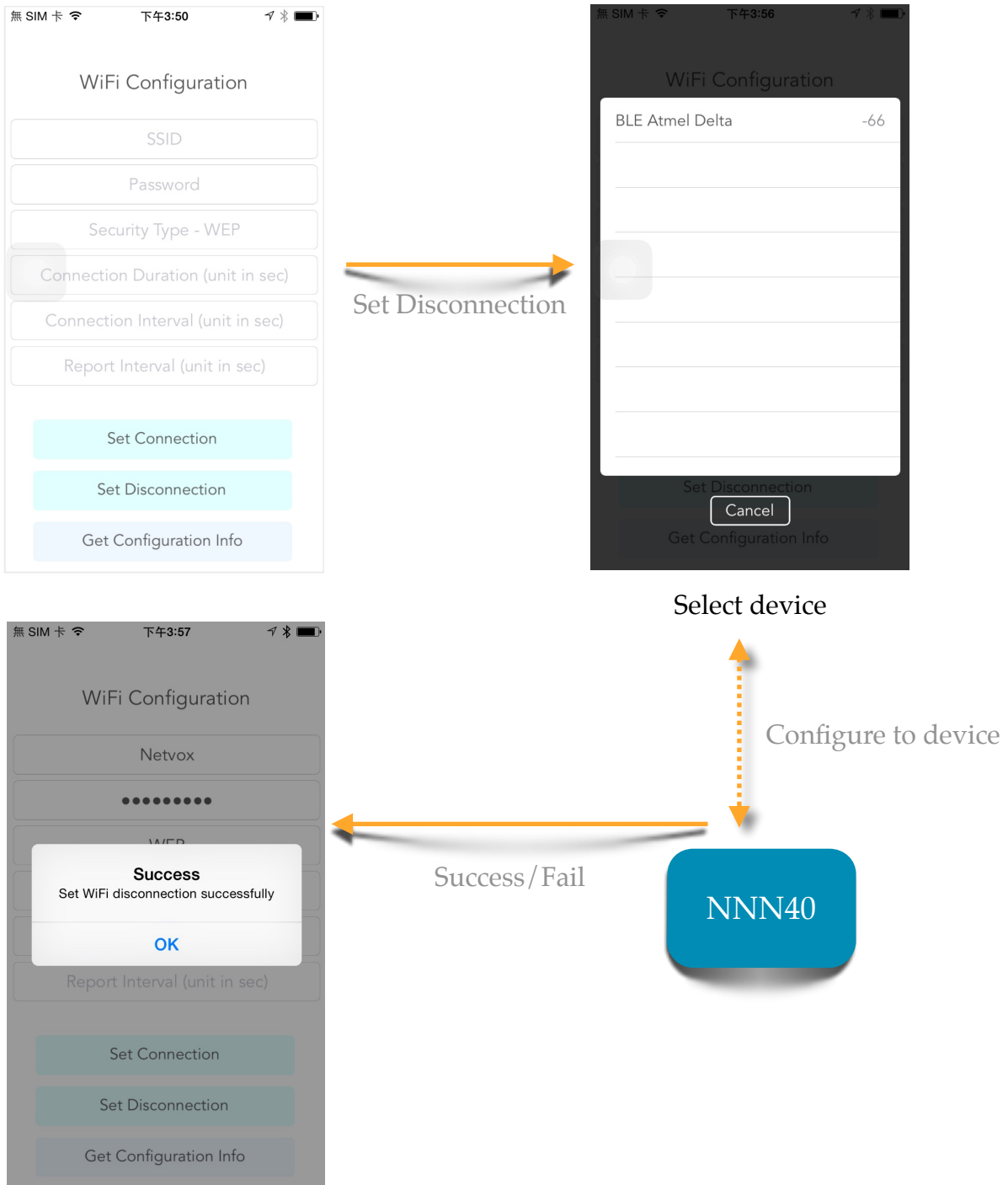


How to use?

- Configure the WiFi connection information
 1. SSID - SSID name maximum length is fixed to 18 characters
 2. Password - Password maximum length is fixed to 18 characters
 3. Security Type - None, WEP, WPA, WPA2
 4. Connection Duration (Optional) - Unit in second
 5. Connection Interval (Optional) - Unit in second
 6. Report Interval (Optional) - Unit in second



- Configure the WiFi disconnection information



- Read current state of device

