

Options for node "Unnamed\_Project"



Category:

- General Options
- Static Analysis
- Runtime Checking
- C/C++ Compiler
- Assembler
- Output Converter
- Custom Build
- Build Actions
- Linker
- Debugger
- Simulator
- Angel
- CADI
- CMSIS DAP
- GDB Server
- IAR ROM-monitor
- I-jet/JTAGjet
- J-Link/J-Trace
- TI Stellaris

Target Output Library Configuration Library Options MISRA-C:200

Processor variant

Core Cortex-M3

Device ON Semiconductor NCS36510

Endian mode

Little

Big

BE32

BE8

Floating point settings

FPU None

D registers -

Advanced SIMD (NEON)

OK Cancel

Options for node "Unnamed\_Project"



Category:

- General Options
- Static Analysis
- Runtime Checking
- C/C++ Compiler**
- Assembler
- Output Converter
- Custom Build
- Build Actions
- Linker
- Debugger
- Simulator
- Angel
- CADI
- CMSIS DAP
- GDB Server
- IAR ROM-monitor
- I-jet/JTAGjet
- J-Link/J-Trace
- TI Stellaris

Factory Settings

- Multi-file Compilation
  - Discard Unused Publics

Code Optimizations Output List Preprocessor Diagnostics

- Ignore standard include directories

Additional include directories: (one per line)

```
$PROJ_DIR$\\.  
$PROJ_DIR$\\..\mbed-os  
$PROJ_DIR$\\..\mbed-os\docs  
$PROJ_DIR$\\..\mbed-os\features  
$PROJ_DIR$\\..\mbed-os\features\frameworks
```

Preinclude file:

.....

Defined symbols: (one per line)

```
IAR  
LOAD_ADDRESS=0x3000
```

- Preprocessor output to file
  - Preserve comments
  - Generate #line directives

OK

Cancel

Options for node "Unnamed\_Project"



Category:

- General Options
- Static Analysis
- Runtime Checking
- C/C++ Compiler
- Assembler
- Output Converter**
- Custom Build
- Build Actions
- Linker
- Debugger
- Simulator
- Angel
- CADI
- CMSIS DAP
- GDB Server
- IAR ROM-monitor
- I-jet/JTAGjet
- J-Link/J-Trace
- TI Stellaris

Factory Settings

Output

Generate additional output

Output format:

binary

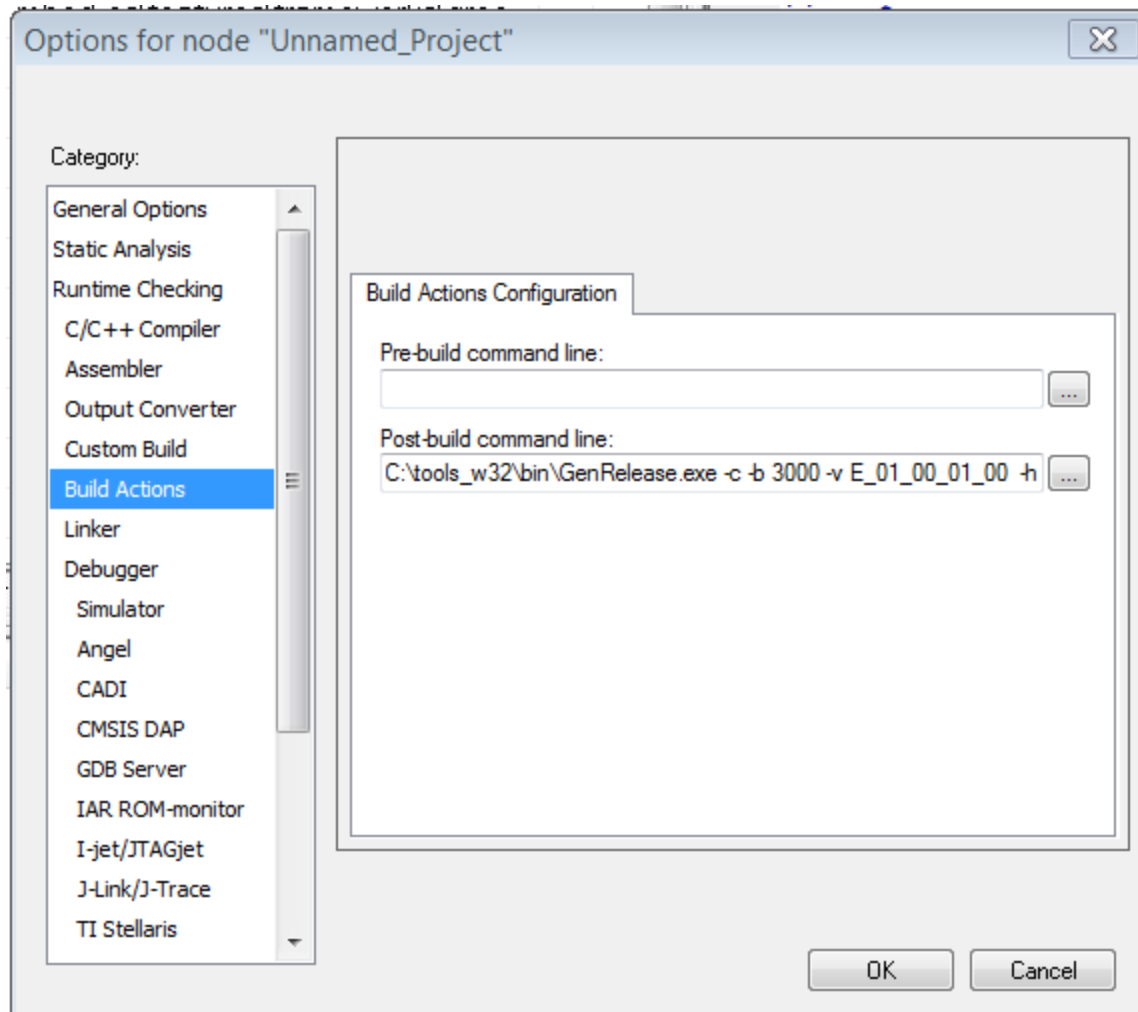
Output file

Override default

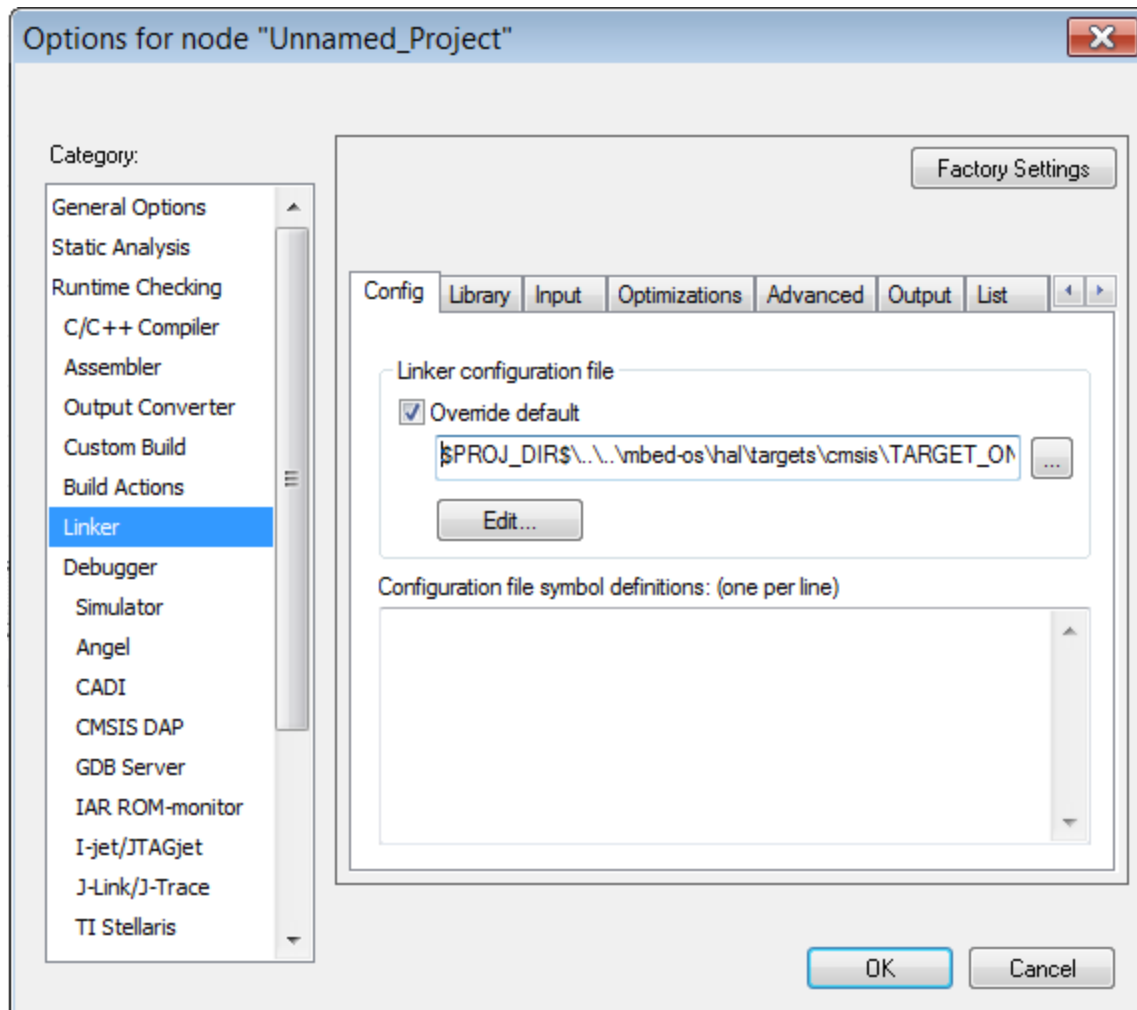
cpp bin

OK

Cancel



C:\tools\_w32\bin\GenRelease.exe -c -b 3000 -v E\_01\_00\_01\_00 -h 01 -i \$TARGET\_BPATH\$.bin -o \$TARGET\_BPATH\$.crc.bin



\$PROJ\_DIR\$\\..\\..\\mbed-  
os\\hal\\targets\\cmsis\\TARGET\_ONSEMI\\TARGET\_NCS36510\\TOOLCHAIN\_IAR\\NCS36510.icf

Options for node "Unnamed\_Project"



Category:

- General Options
- Static Analysis
- Runtime Checking
- C/C++ Compiler
- Assembler
- Output Converter
- Custom Build
- Build Actions
- Linker**
- Debugger
- Simulator
- Angel
- CADI
- CMSIS DAP
- GDB Server
- IAR ROM-monitor
- I-jet/JTAGjet
- J-Link/J-Trace
- TI Stellaris

Factory Settings

- Config
- Library**
- Input
- Optimizations
- Advanced
- Output
- List

Automatic runtime library selection

Additional libraries: (one per line)

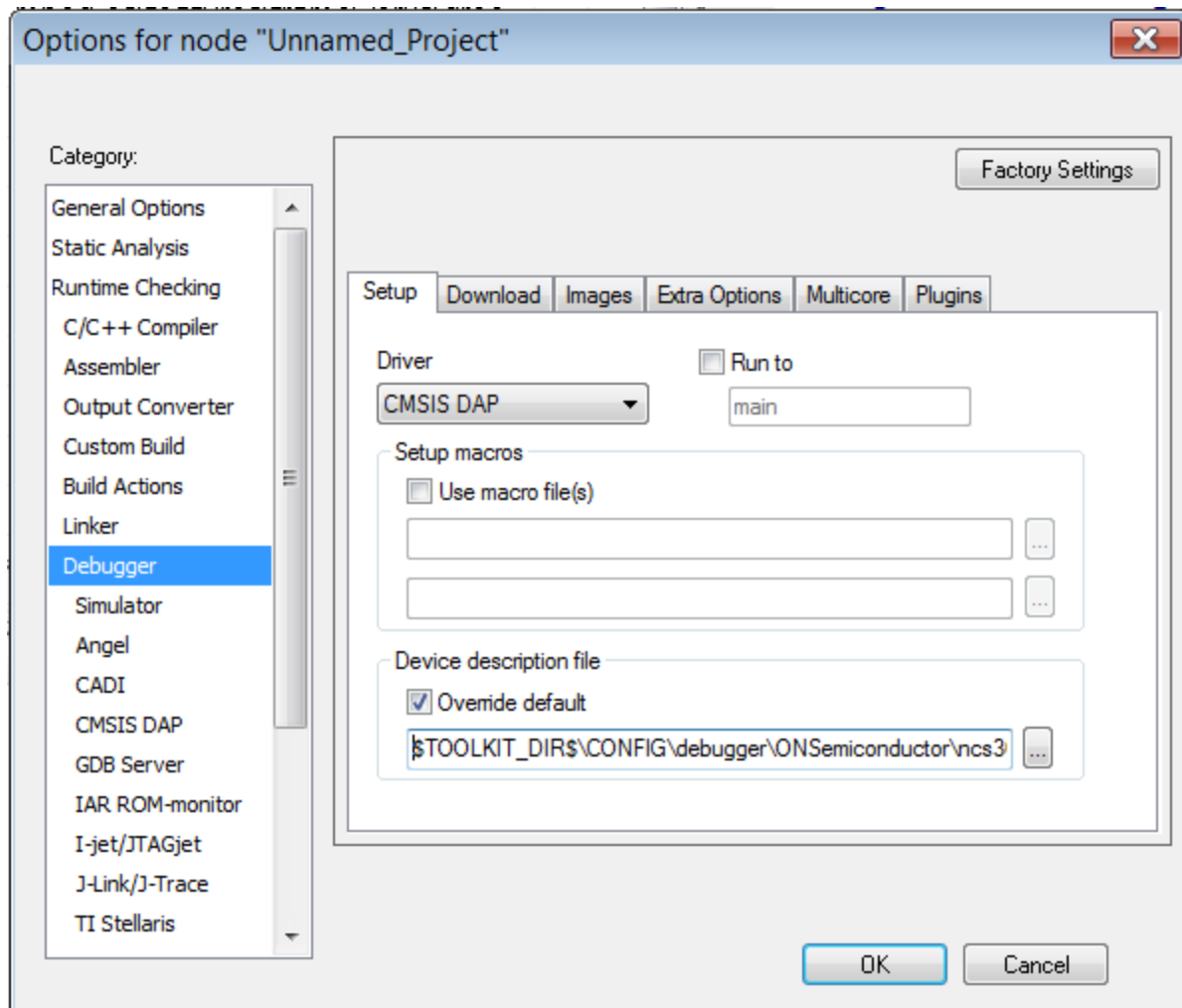
Text input field for additional libraries with a list icon on the right.

Override default program entry

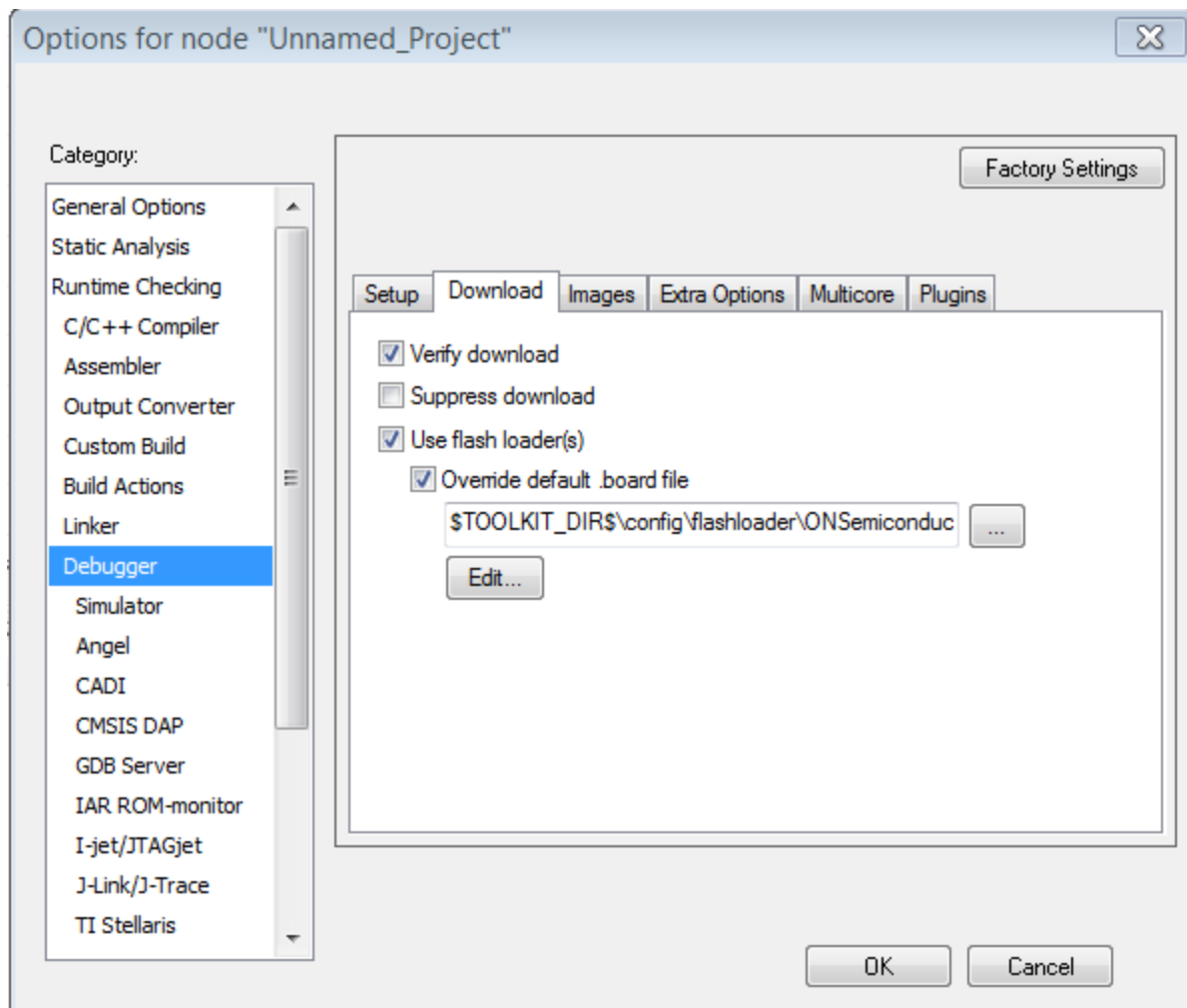
- Entry symbol
- Defined by application

OK

Cancel



\$TOOLKIT\_DIR\$\CONFIG\debugger\ONSemiconductor\ncs36510.ddf



\$TOOLKIT\_DIR\$\config\flashloader\ONSemiconductor\ncs36510\ncs36510.board



