

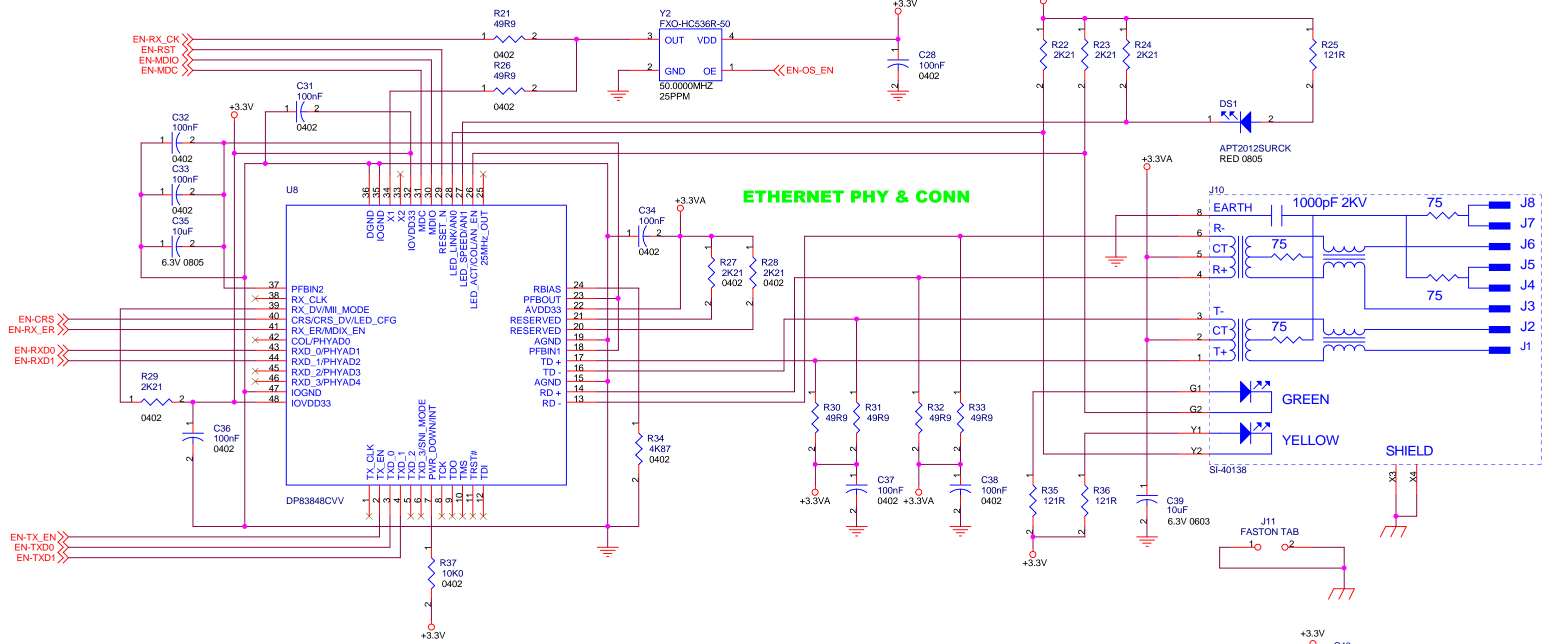
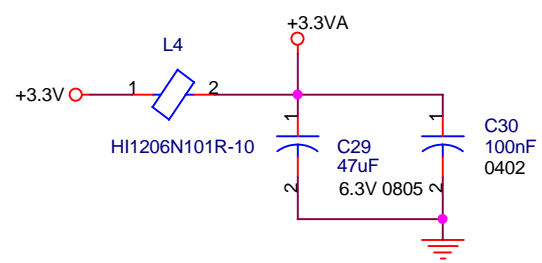
LARGE COPPER AREA

**MAC ADDRESS
I2C = 0XA0**

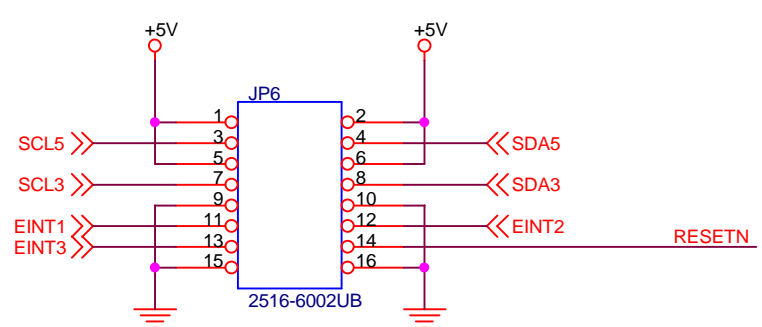
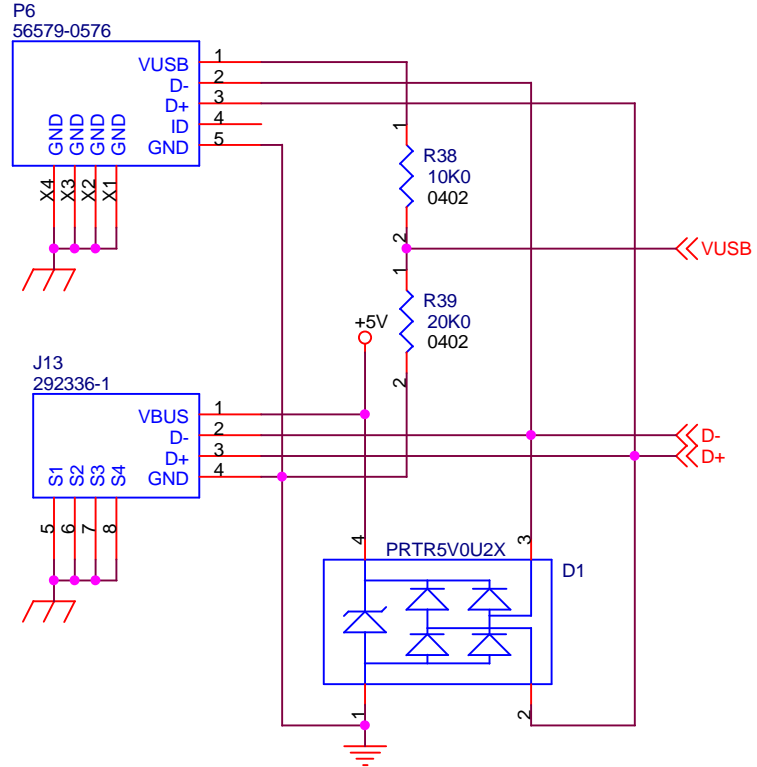
I2C0 V+ SEL

I2C0 EXT HEADER

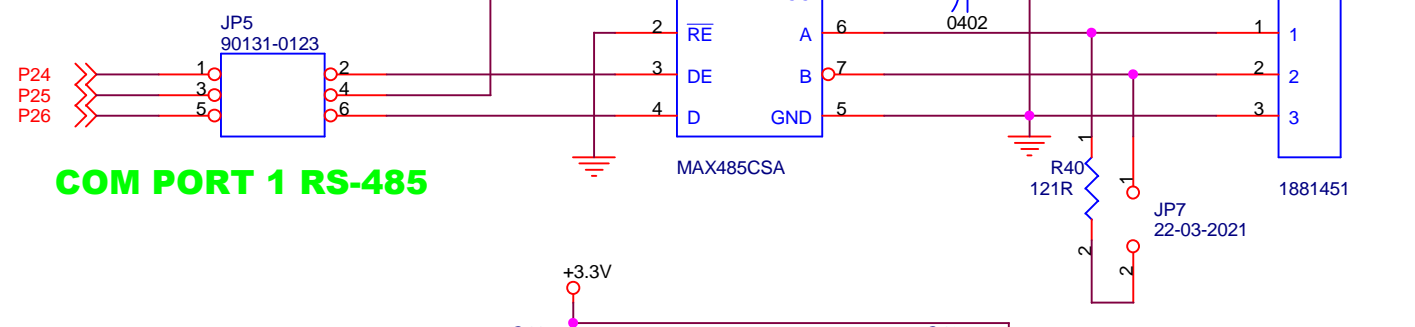
<p>Unless noted all resistors are 1/8 W 0805 All Capacitors are 50V X7R 0805</p>		<p>EMBEDDED SOLUTIONS 18408 Belvedere Road Orlando, Florida 32820 V-(407)-325-3524 F-(407)-568-7893 embedded@bellsouth.net</p>	
<p>LPC1768 TEST BOARD</p>			
<p>CONFIDENTIAL</p>		<p>Size C</p>	<p>CAGE Code</p>
<p>Tuesday, April 16, 2013</p>		<p>Scale</p>	<p>DWG NO ES-087</p>
		<p>Sheet 1</p>	<p>Rev A</p>



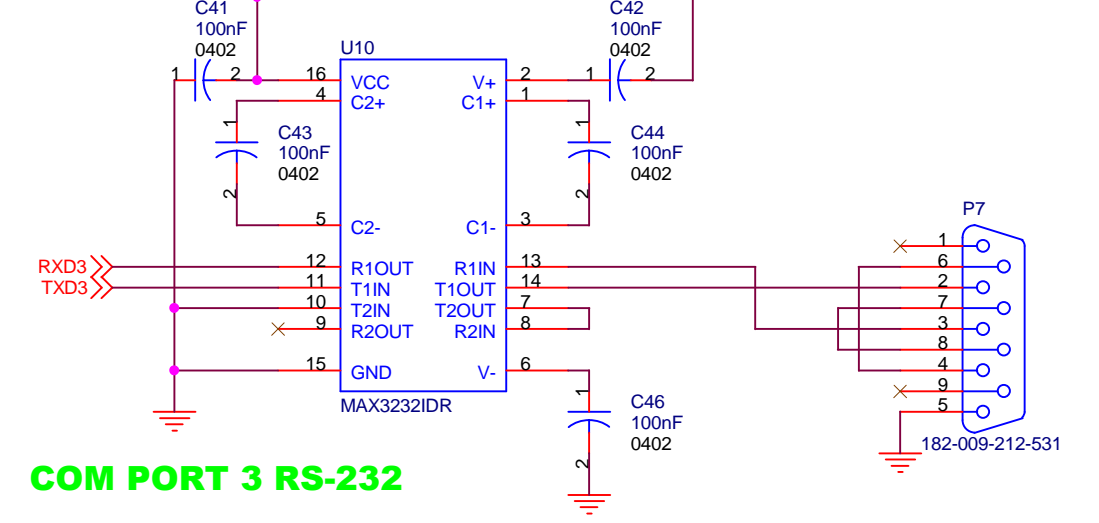
USB HOST CONNECTORS



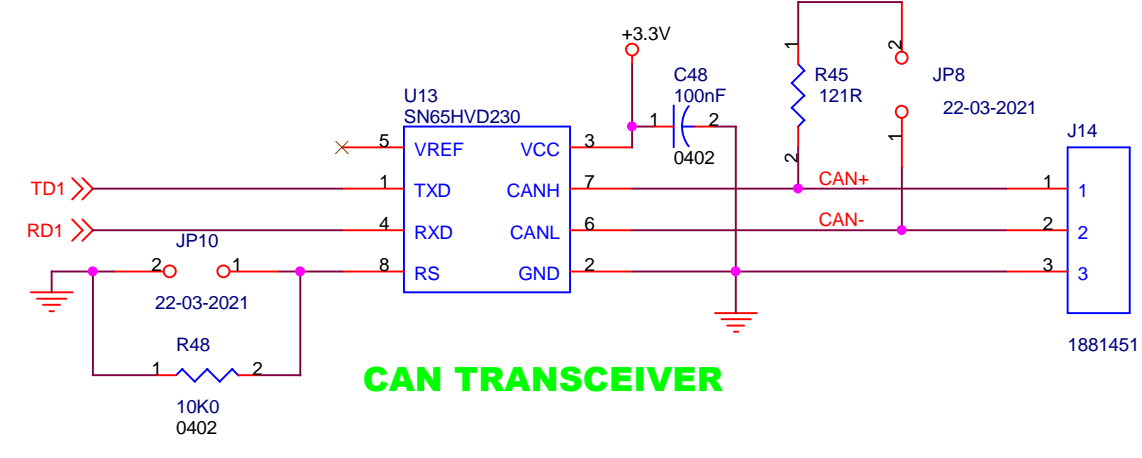
I2C1 EXT I/O HEADER



COM PORT 1 RS-485

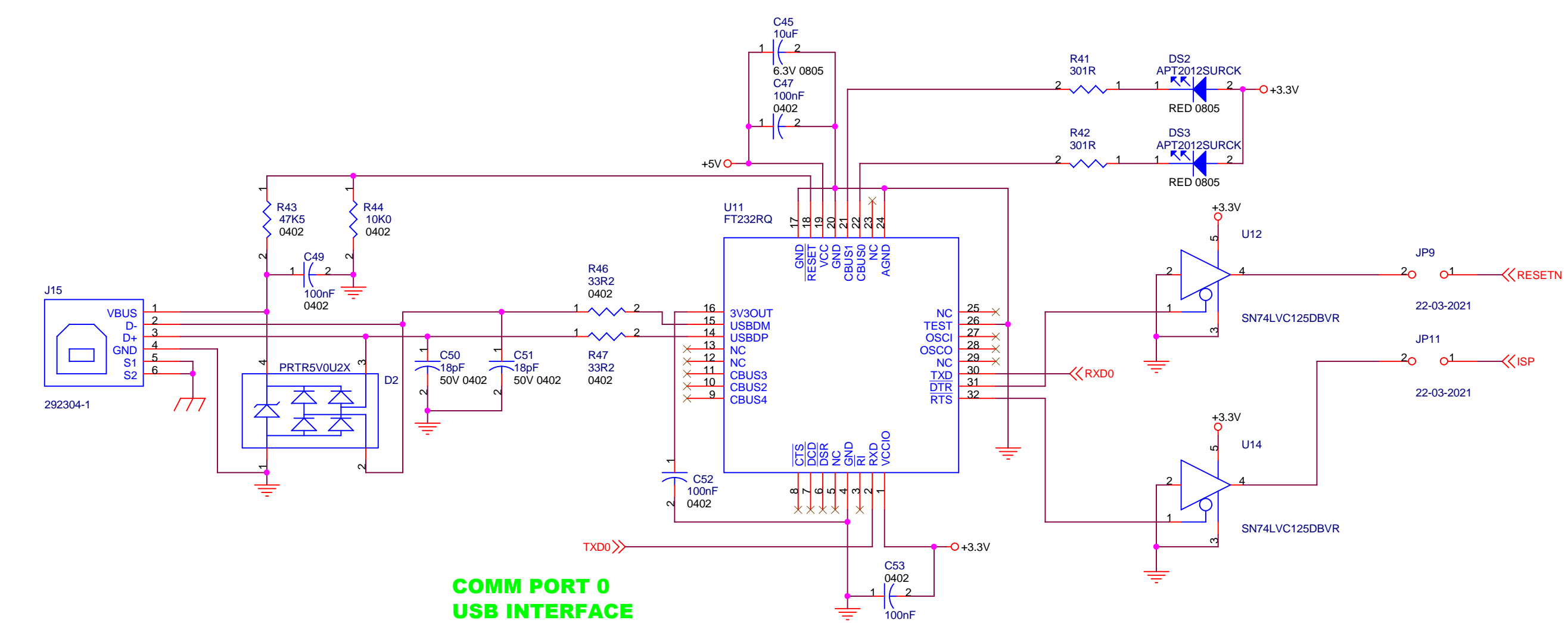


COM PORT 3 RS-232

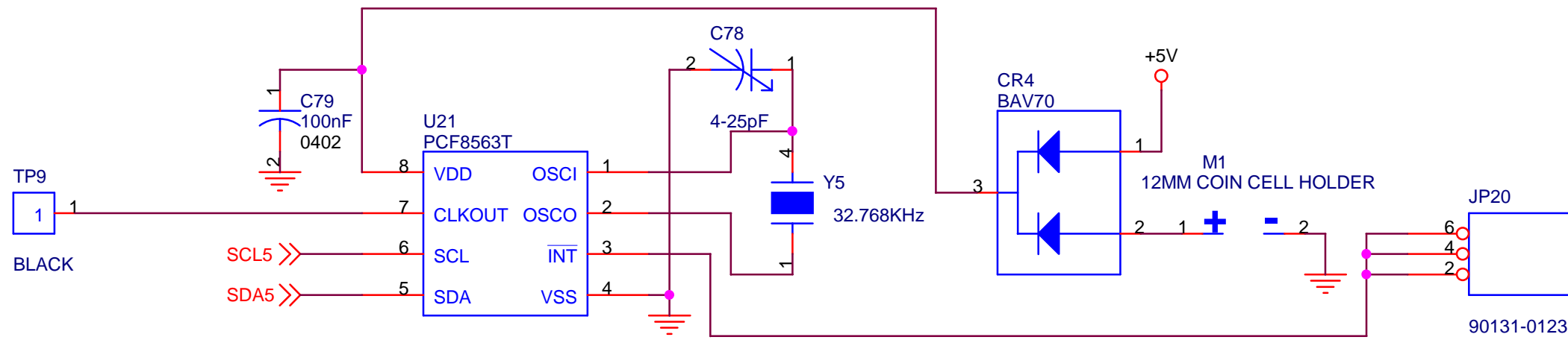


CAN TRANSCEIVER

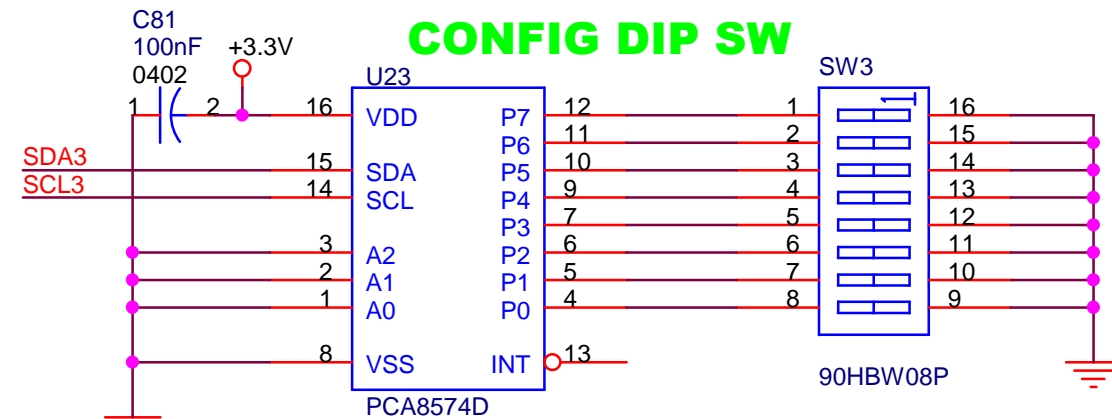
**COMM PORT 0
USB INTERFACE**



<p>Unless noted all resistors are 1/8 W 0805 All Capacitors are 50V X7R 0805</p>	<p>EMBEDDED SOLUTIONS 18408 Belvedere Road Orlando, Florida 32820</p>			<p>V-(407)-325-3524 F-(407)-568-7893 embedded@bellsouth.net</p>
	<p>LPC1768 TEST BOARD</p>			
<p>CONFIDENTIAL</p>	<p>Size C</p>	<p>CAGE Code</p>	<p>DWG NO ES-087</p>	<p>Rev A</p>
	<p>Tuesday, April 16, 2013</p>	<p>Scale</p>	<p>Sheet 2 of 5</p>	<p>1</p>



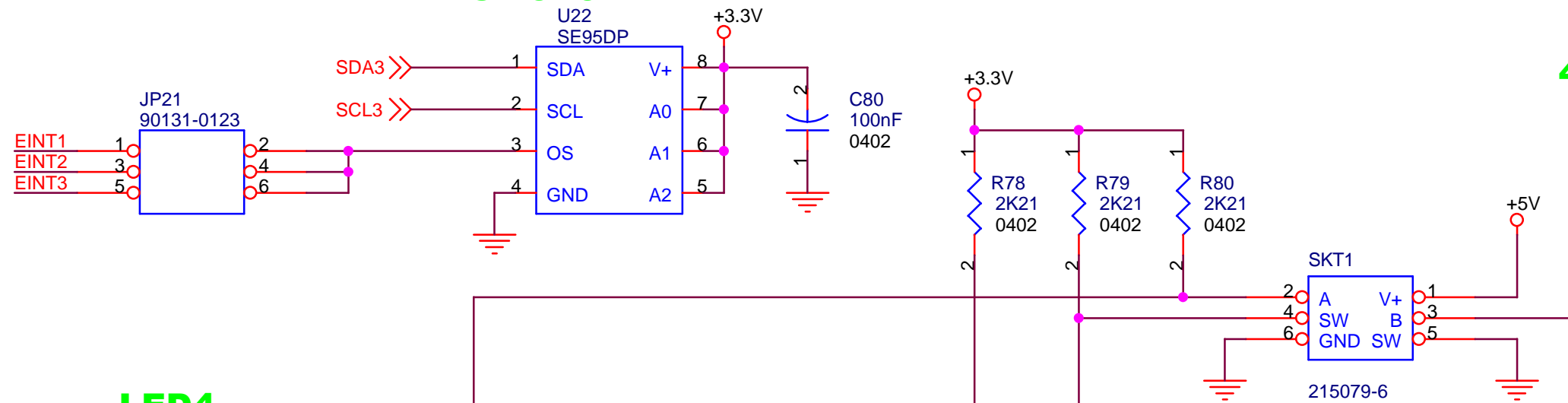
REAL TIME CLOCK
I2C = 0XA2



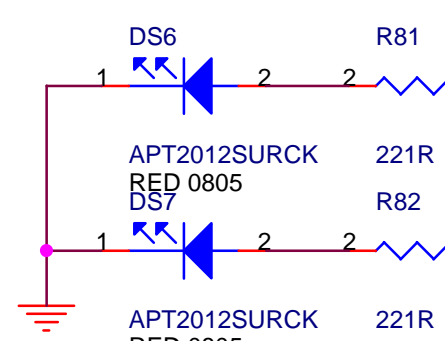
CONFIG DIP SW

I2C = 0X40

TEMP SENSOR
I2C - 0X9E

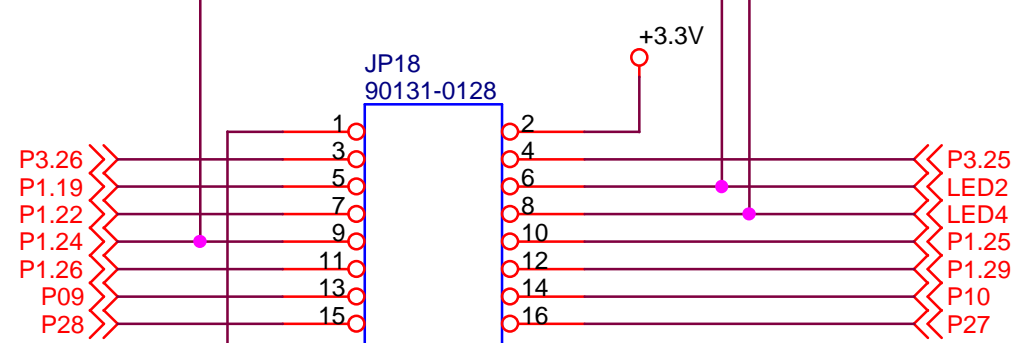


LED4



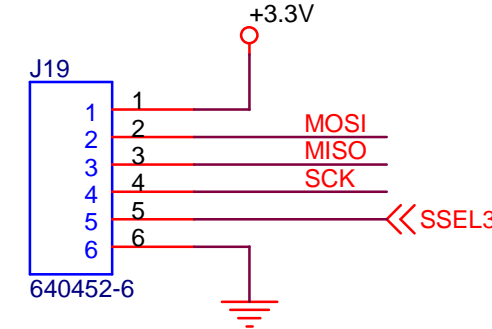
LED 2

OPTICAL INCR ENCODER

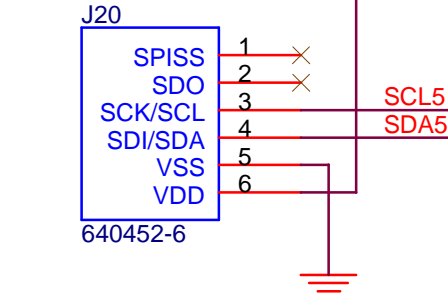


EXT I/O HEADER

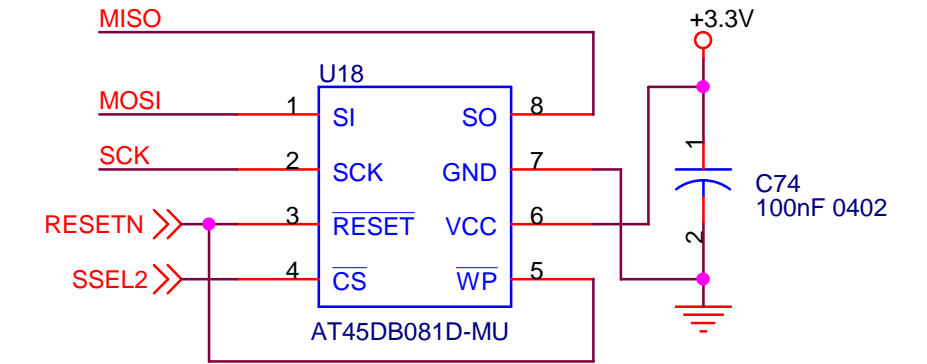
EXT SPI HEADER



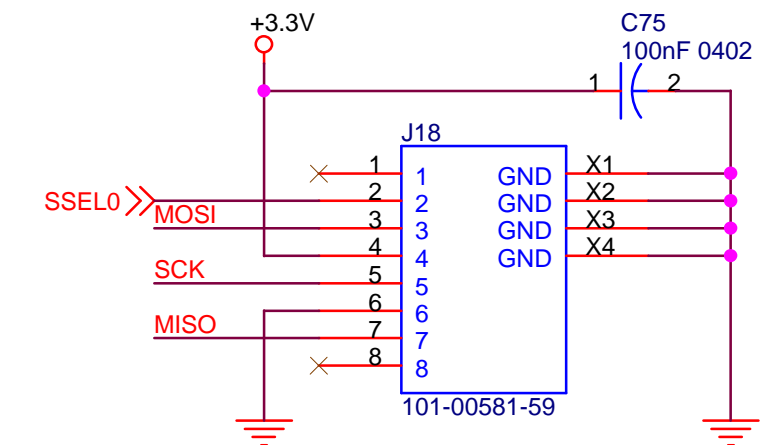
4 X 20 CHAR LCD
I2C = 0X50



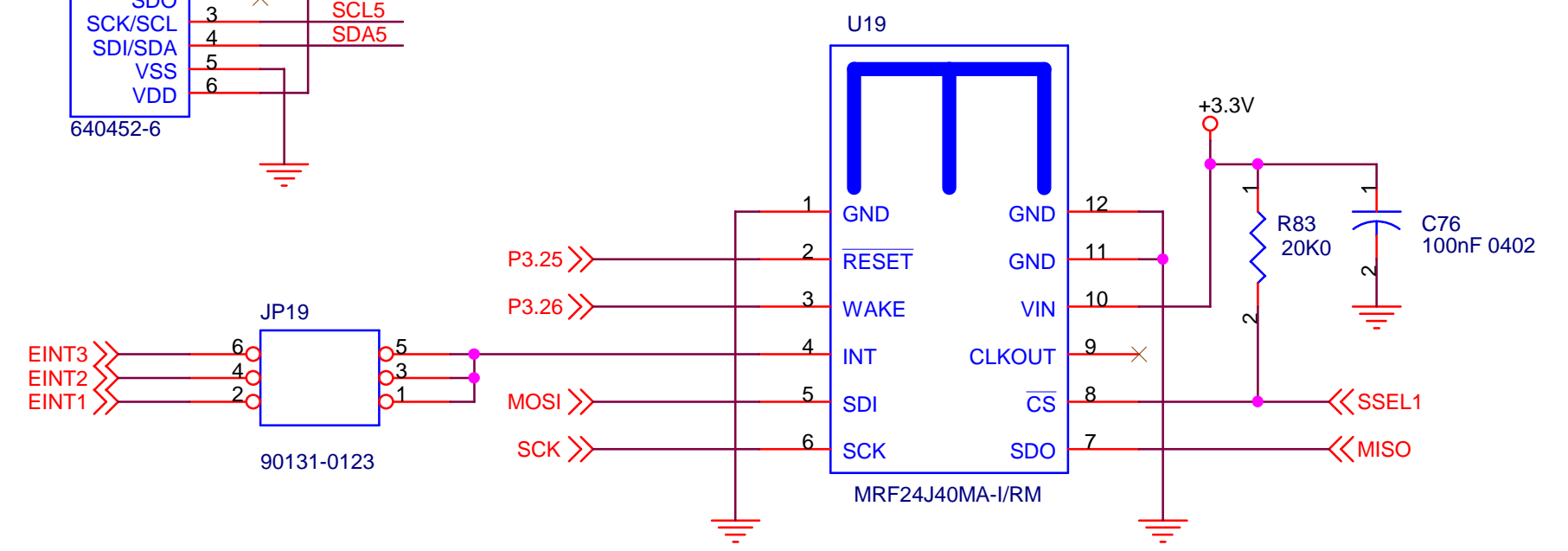
SERIAL FLASH MEM



MICRO SD CARD

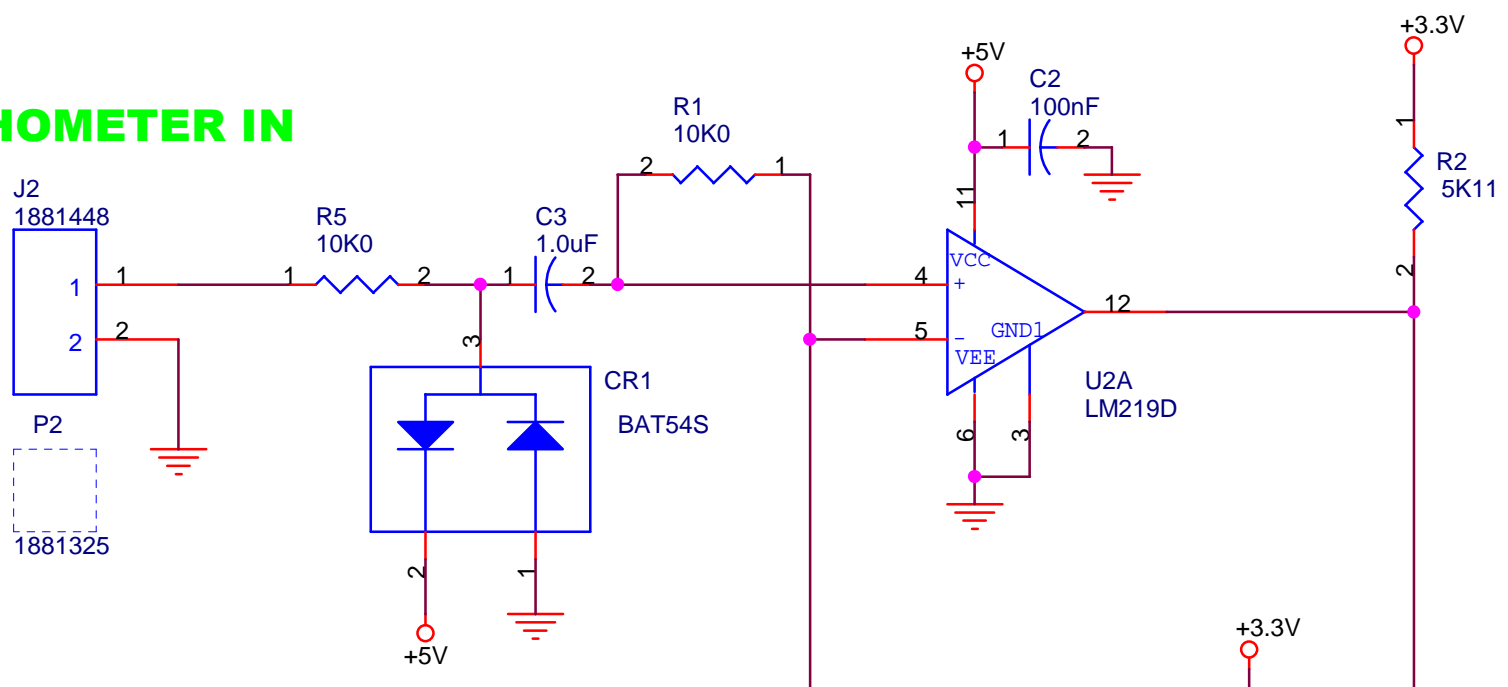


2.4GHZ TRANSCEIVER

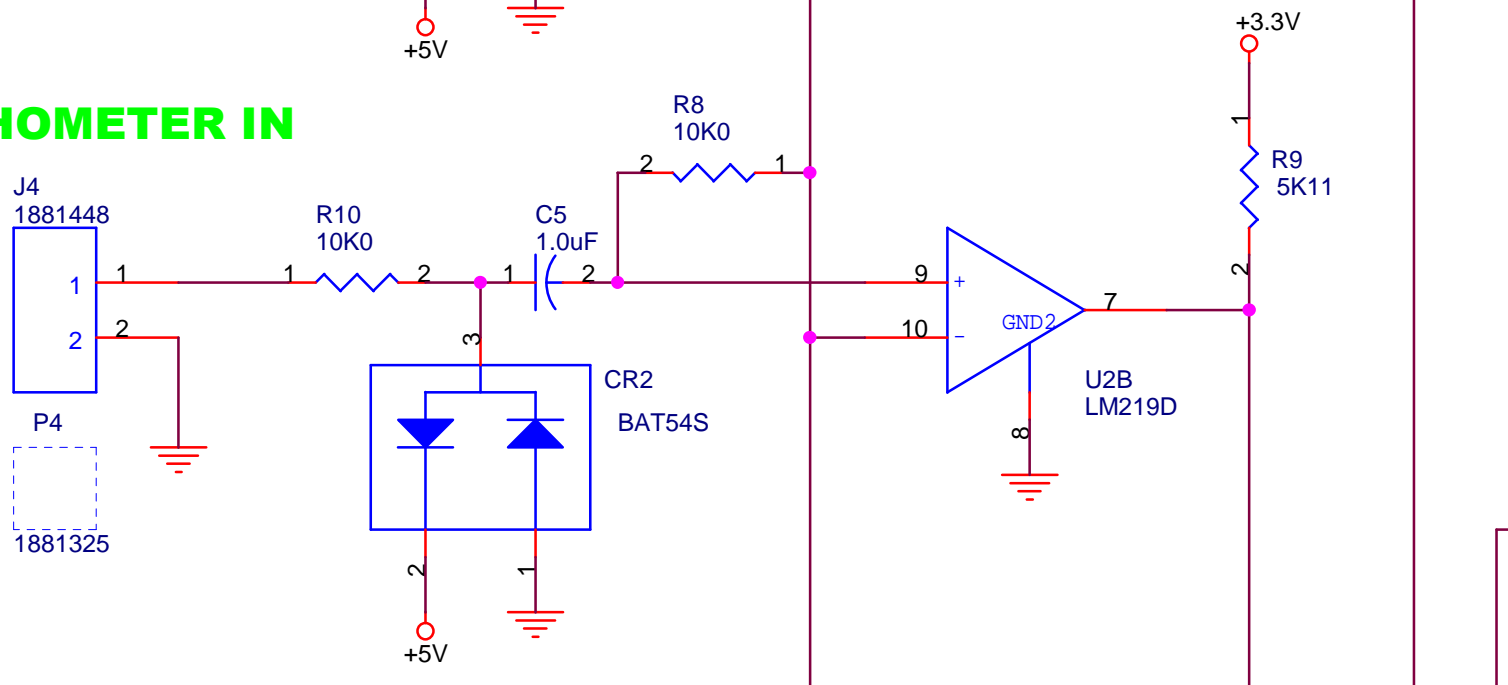


<p>Unless noted all resistors are 1/8 W 0805 All Capacitors are 50V X7R 0805</p>	EMBEDDED SOLUTIONS	
	<p>18408 Belvedere Road Orlando, Florida 32820</p>	<p>V-(407)-325-3524 F-(407)-568-7893 embedded@bellsouth.net</p>
LPC1768 TEST BOARD		
CONFIDENTIAL	<p>Size B</p>	<p>DWG NO ES-087</p>
<p>Tuesday, April 16, 2013</p>	<p>Scale</p>	<p>Sheet 3 of 5</p>

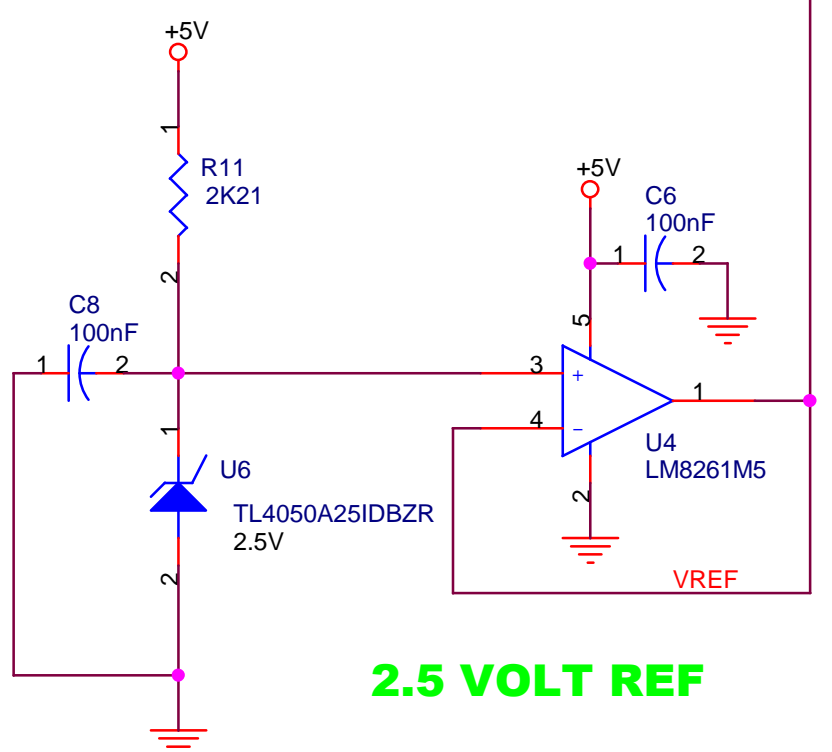
TACHOMETER IN



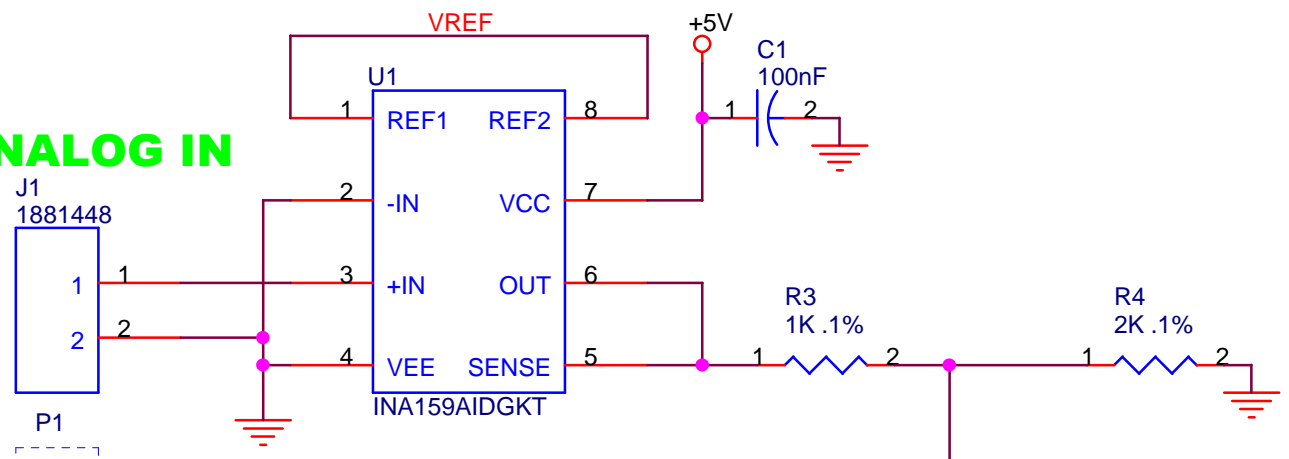
TACHOMETER IN



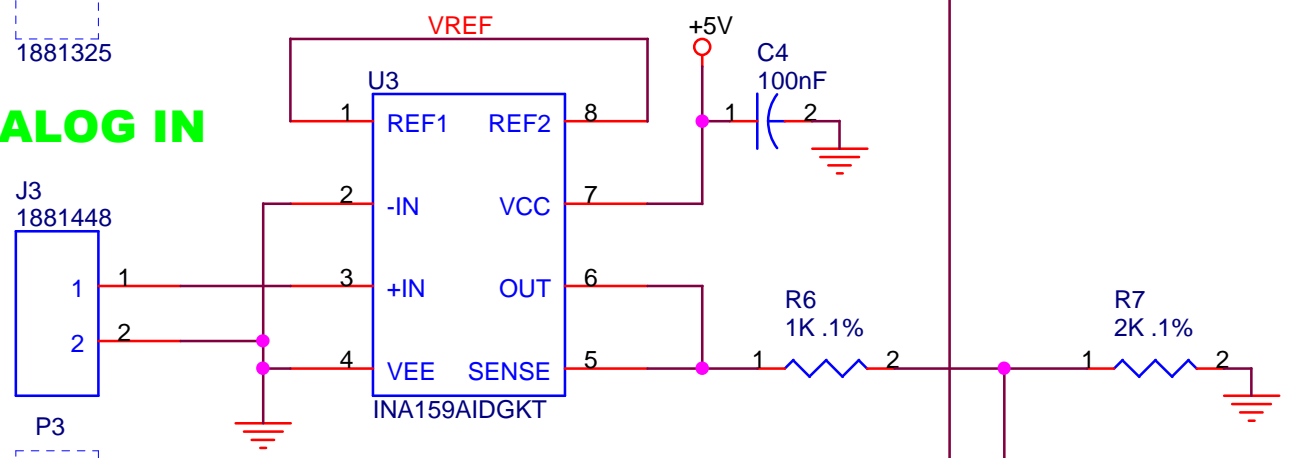
2.5 VOLT REF



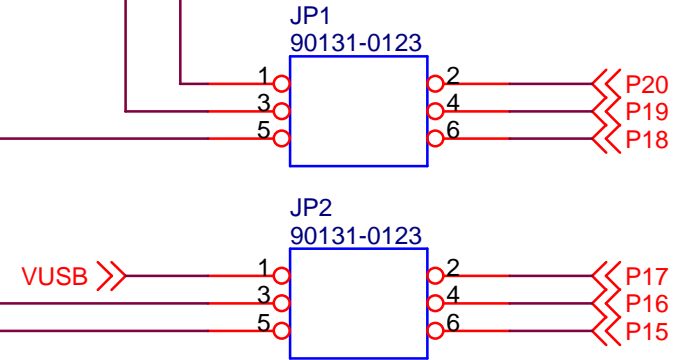
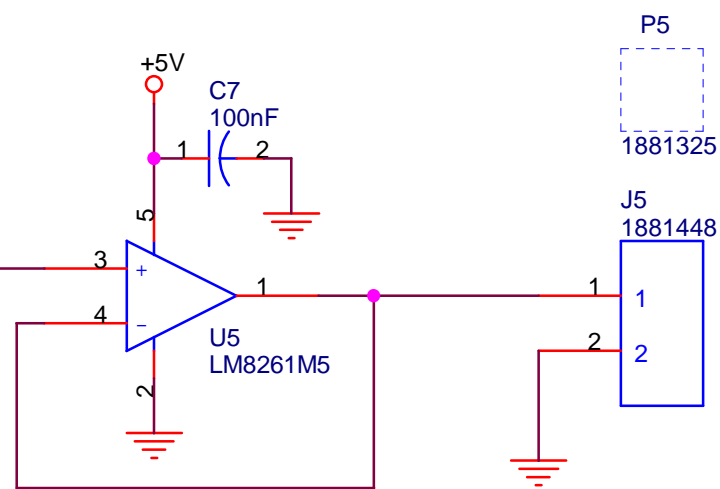
+/- 10 VOLT ANALOG IN



+/- 10 VOLT ANALOG IN



ANALOG OUT



Unless noted all resistors are
1/8 W 0805
All Capacitors are
50V X7R 0805

EMBEDDED SOLUTIONS
18408 Belvedere Road Orlando, Florida 32820
V-(407)-325-3524 F-(407)-568-7893
embedded@bellsouth.net

LPC1768 TEST BOARD

CONFIDENTIAL	Size B	CAGE Code	DWG NO	Rev A
	Scale		ES-087	Sheet 4 of 5

Tuesday, April 16, 2013

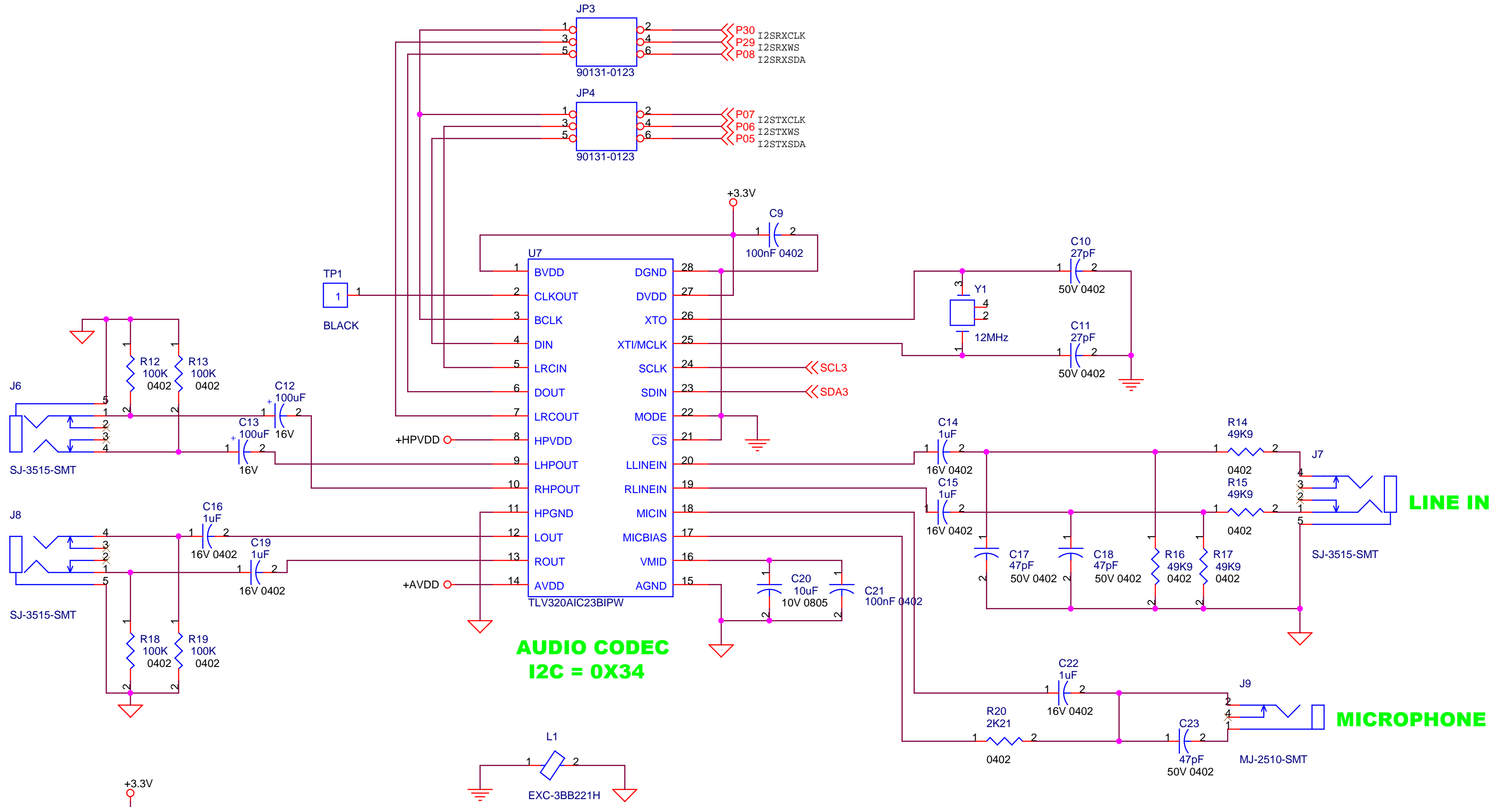
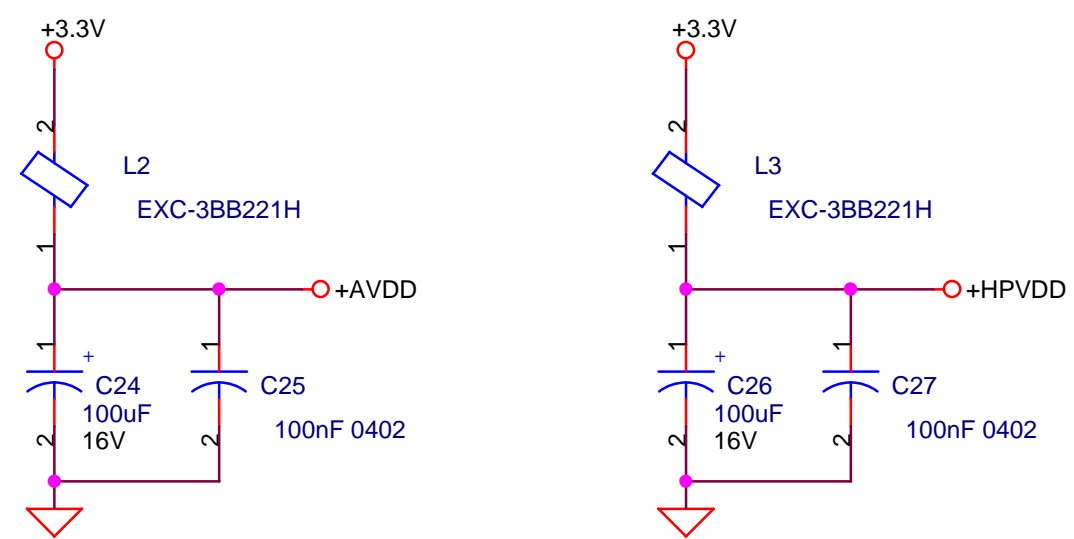
HEADPHONE OUT

LINE OUT

AUDIO CODEC
I2C = 0X34

LINE IN

MICROPHONE



Unless noted all resistors are
1/8 W 0805
All Capacitors are
50V X7R 0805

EMBEDDED SOLUTIONS
18408 Belvedere Road Orlando, Florida 32820
V-(407)-325-3524 F-(407)-568-7893
embedded@bellsouth.net

LPC1768 TEST BOARD

CONFIDENTIAL

Size B	CAGE Code	DWG NO ES-087	Rev A
-----------	-----------	-------------------------	-----------------

Tuesday, April 16, 2013

Scale	Sheet 5 of 5
-------	-----------------