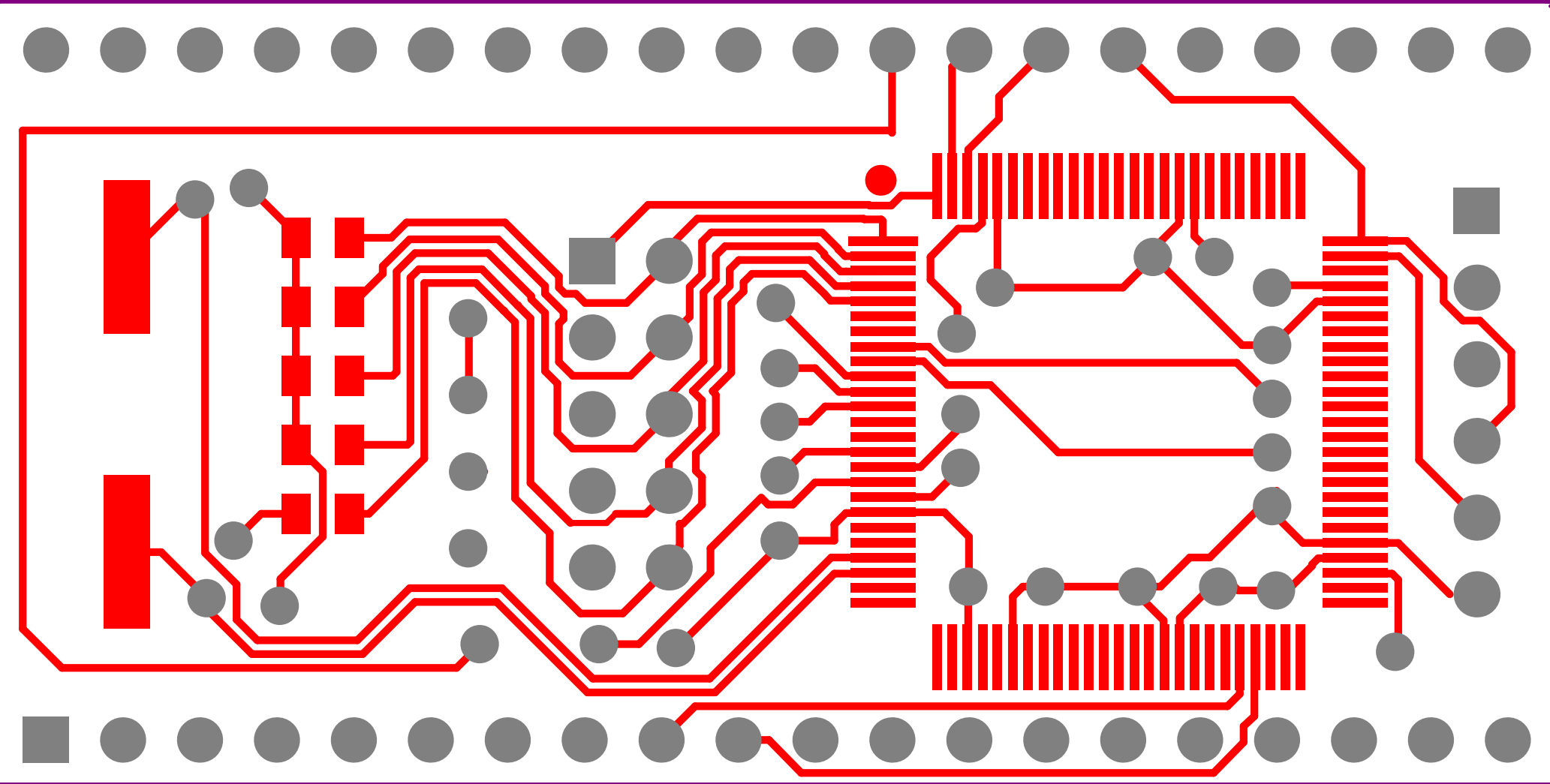
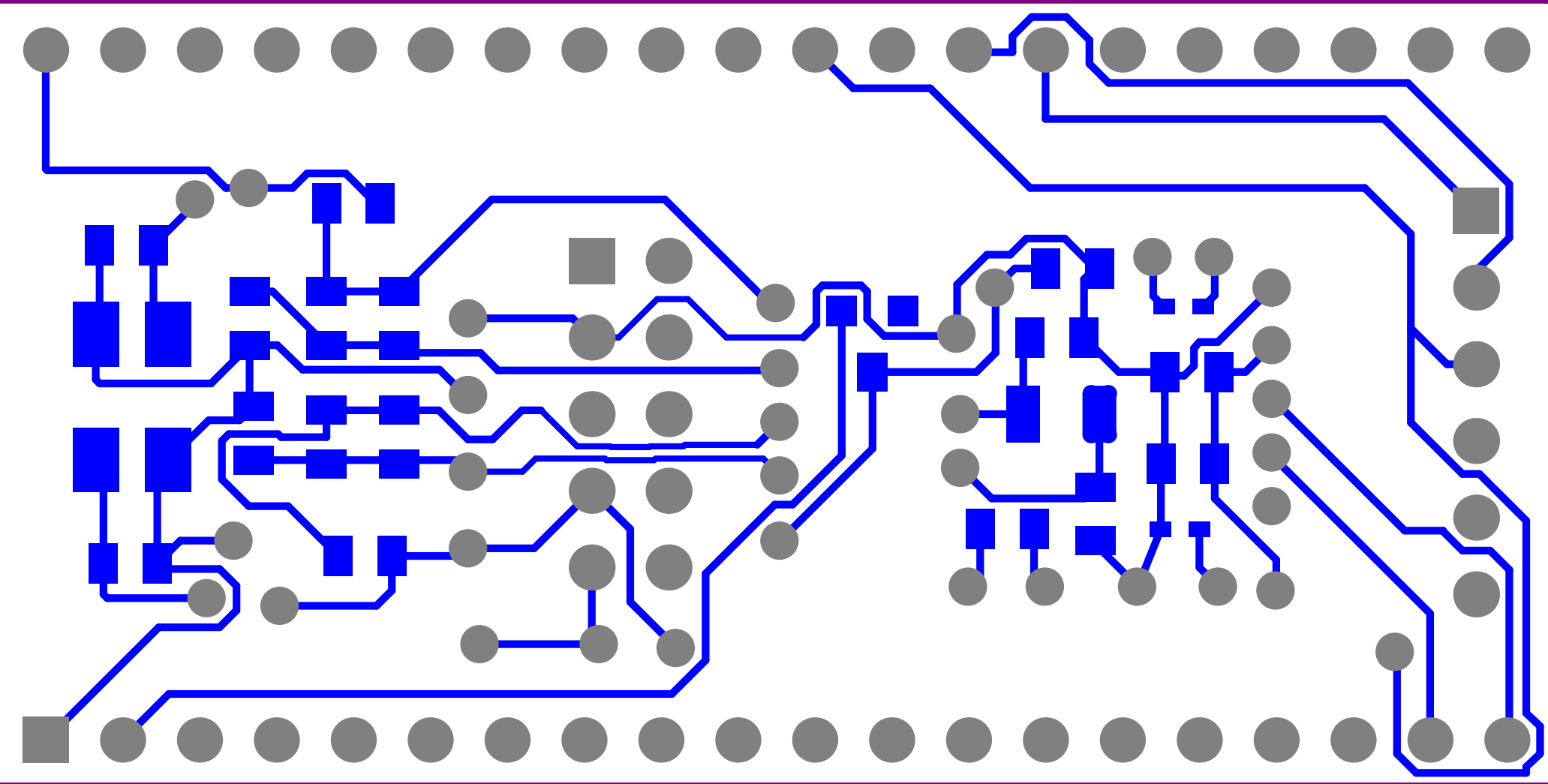


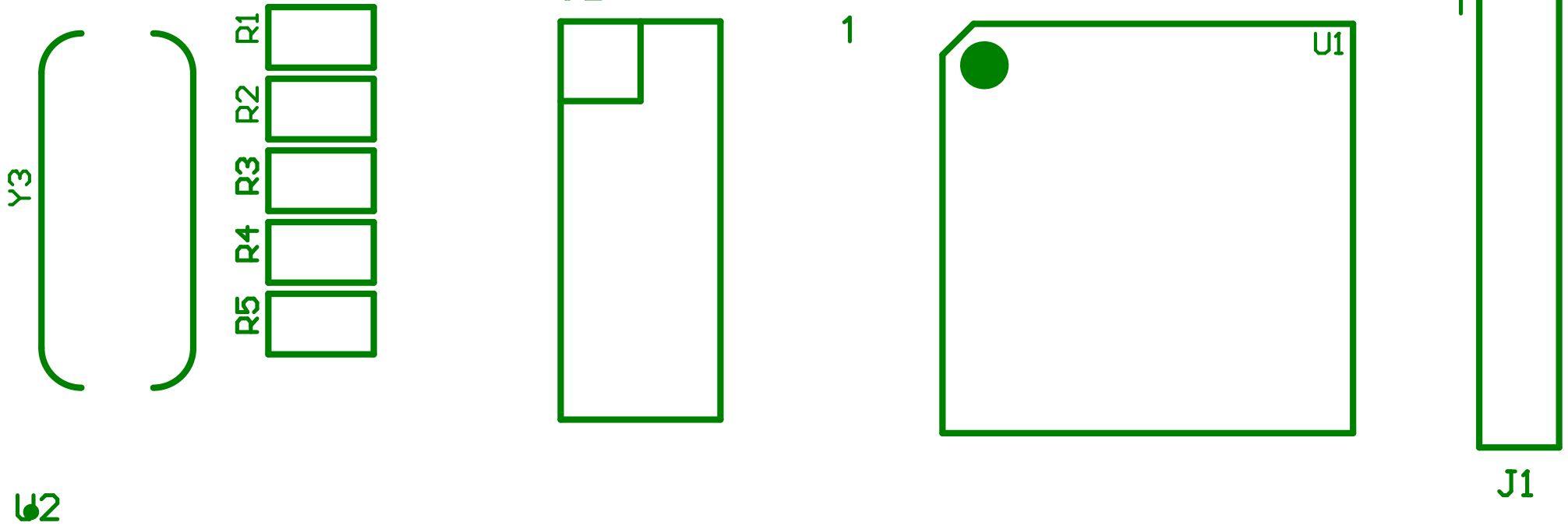
U1B	Pin	Signal	Pin	Signal
	46	P0.0/RD1/TXD3/SDA1	95	P1.0/ENET_TXD0
	47	P0.1/TD1/RXD3/SCL1	94	P1.1/ENET_TXD1
	98	P0.2/TXD0/AD0.7	93	P1.4/ENET_TX_EN
	99	P0.3/RXD0/AD0.6	92	P1.8/ENET_CRSS
	81	P0.4/I2SRX_CLK/RD2/CAP2.0	91	P1.9/ENET_RXD0
	80	P0.5/I2SRX_WS/TD2/CAP2.1	90	P1.10/ENET_RXD1
	79	P0.5/I2SRX_SDA/SSEL/MAT2.0	89	P1.14/ENET_RX_ER
	78	P0.7/I2STX_CLK/SCK1/MAT2.1	88	P1.15/ENET_REF_CLK
			87	P1.16/ENET_MDC
			86	P1.17/ENET_MDIO
	77	P0.8/I2STX_WS/MISO1/MAT2.2		
	76	P0.9/I2STX_SDA/MOSI1/MAT2.3		
	48	P0.10/TXD2/SDA2/MAT3.0	32	P1.18/USB_UP_LED/PWM1.1/CAP1.0
	49	P0.11/RXD2/SCL2/MAT3.1	33	P1.19/MCOA/nUSB_PPW/CAP1.1
	62	P0.15/TXD1/SCK0/SCK	34	P1.20/MCFB0/PWM1.2/SCK0
			35	P1.21/MCABORT/PWM1.3/SSEL0
	63	P0.16/RXD1/SSEL0/SSEL	36	P1.22/MCOB/USB_PPWRD/MAT1.0
	61	P0.17/CTS1/MISO0/MISO	37	P1.23/MCFB1/PWM1.4/MISO0
	60	P0.18/DCD1/MOSI0/MOSI	38	P1.24/MCFB2/PWM1.5/MOSI0
	59	P0.19/DSR1/SDA1	39	P1.25/MCIA/MAT1.1
	58	P0.20/DTR1/SCL1	40	P1.26/MC2A1.0/MAT0.0
	57	P0.21/RI1/RD1	43	P1.27/CLKOUT/nUSB_OVRCR/CAP0.1
	56	P0.22/RIS1/TD1	44	P1.28/MC2A1.1/MAT0.1
	9	P0.23/AD0.0/I2SRX_CLK/CAP3.0	45	P1.29/MC2B/PCAP1.1/MAT0.1
			21	P1.30/VBUS/AD0.4
			20	P1.31/SCK1/AD0.5
	8	P0.24/AD0.1/I2SRX_WS/CAP3.1	75	P2.0/PWM1.1/TXD1
	7	P0.25/AD0.2/I2SRX_SDA/TXD3	74	P2.1/PWM1.2/RXD1
	6	P0.26/AD0.3/AOXR/RXD3	73	P2.2/PWM1.3/CTS1/TRACEDATA3
	25	P0.27/SDA0/USB_SDA	70	P2.3/PWM1.4/DCD1/TRACEDATA2
	24	P0.28/SCL0/USB_SCL	69	P2.4/PWM1.5/DSR1/TRACEDATA1
	29	P0.29/USD_DP	68	P2.5/PWM1.6/DTR1/TRACEDATA0
	30	P0.30/USB_DM	67	P2.6/PCAP1.0/RI1/TRACECLK
			66	P2.7/RD2/RTS1
	27	P3.25/MAT0.0/PWM1.2	65	P2.8/TD2/TXD2
	26	P3.26/STCLK/MAT0.1/PWM1.3	64	P2.9/USB_CONNECT/RXD2
			53	P2.10/nEINT0/NMI
	82	P4.28/RX_MCLK/MAT2.0/TXD3	52	P2.11/nEINT1/I2STX_CLK
	85	P4.29/TX_MCLK/MAT2.1/RXD3	51	P2.12/nEINT2/I2STX_WS
			50	P2.13/nEINT3/I2STX_SDA

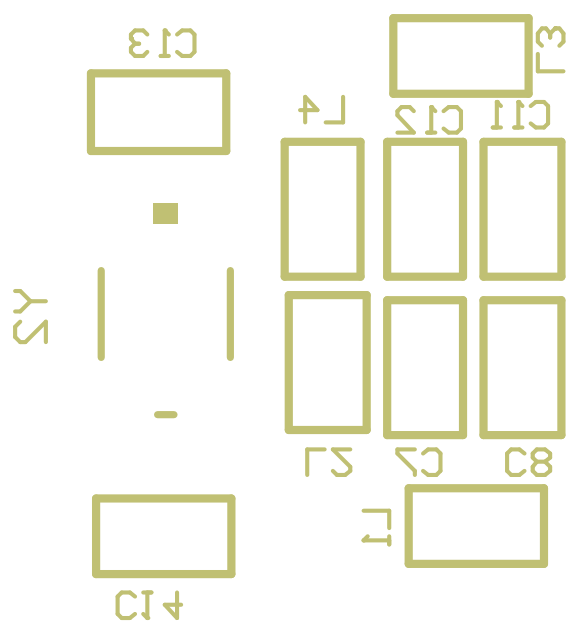
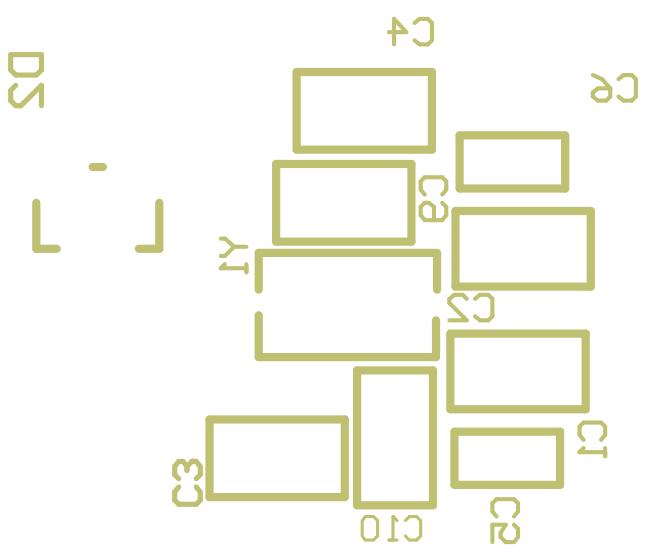
Title		
Size	Number	Revision
B		
Date:	2/27/2013	Sheet of
File:	C:\EDUCATION\LPC1768_BareBone	4 of 4





MBED Prototype to Hardware  
MBED ISP (R.L. Rev 0.1)

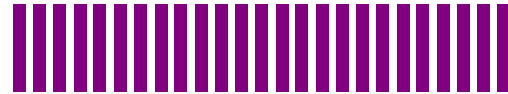


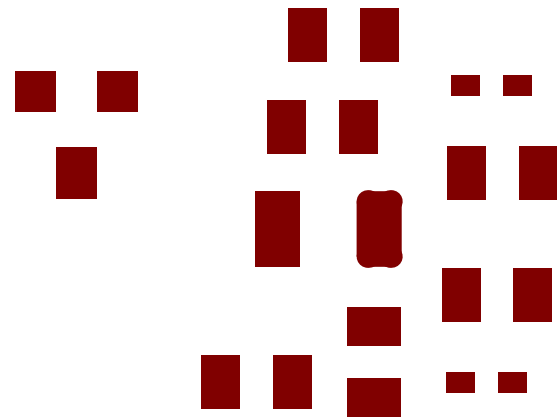
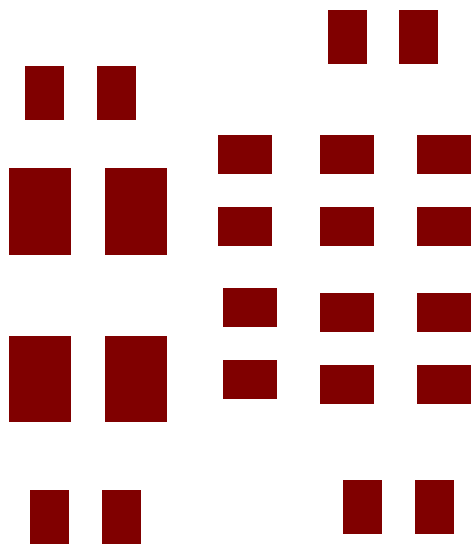


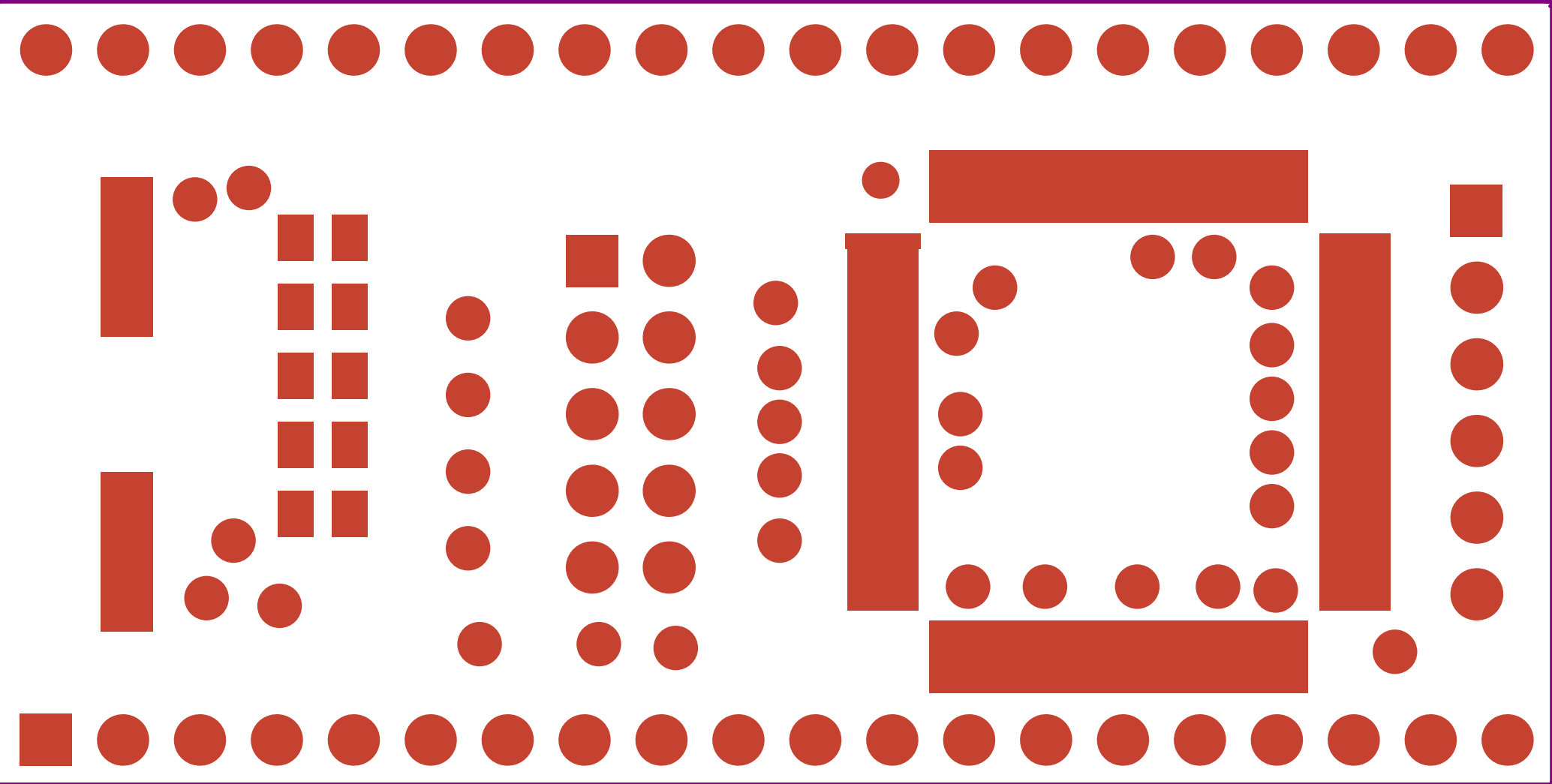
Y2

F1

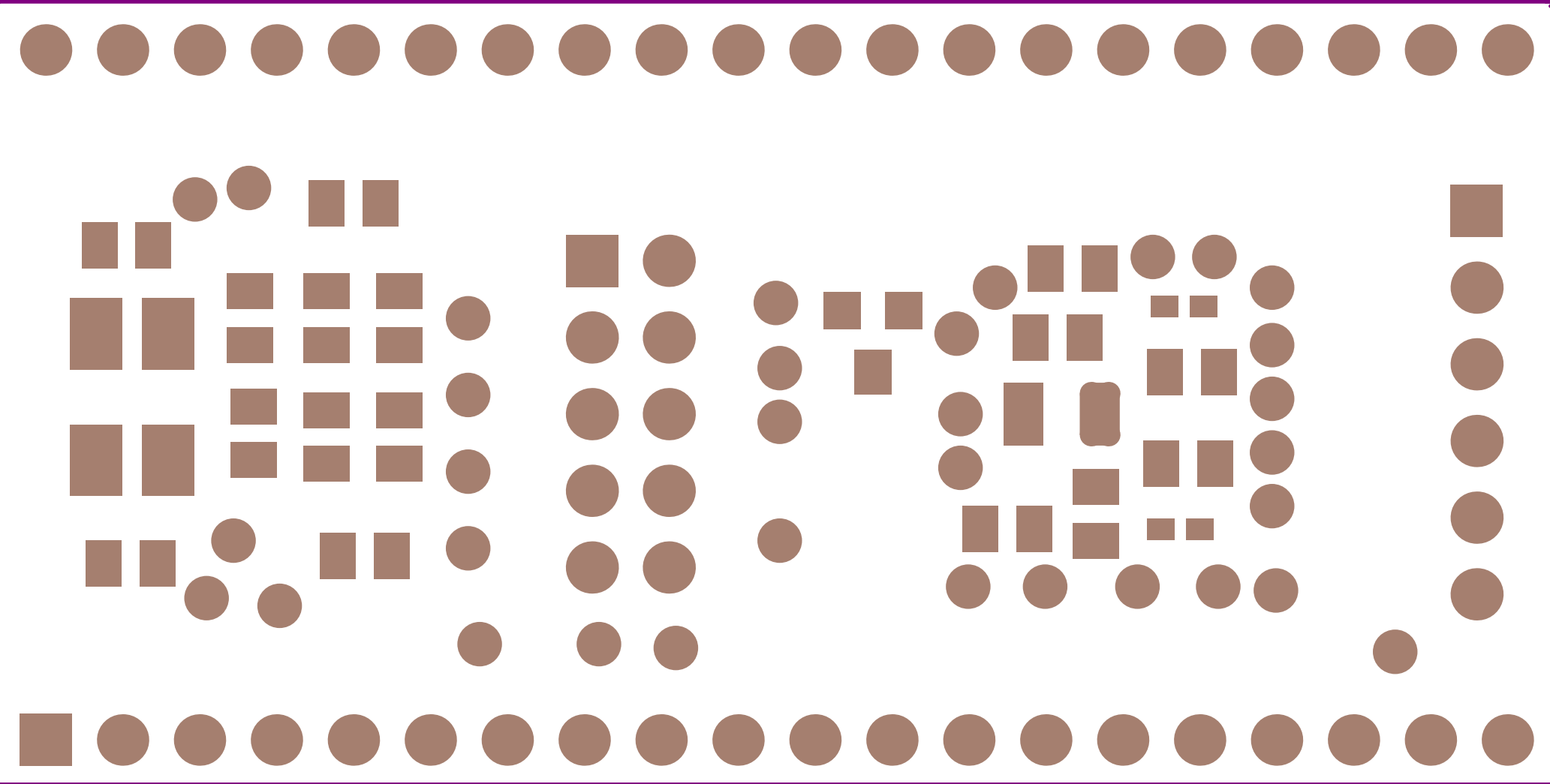
C13



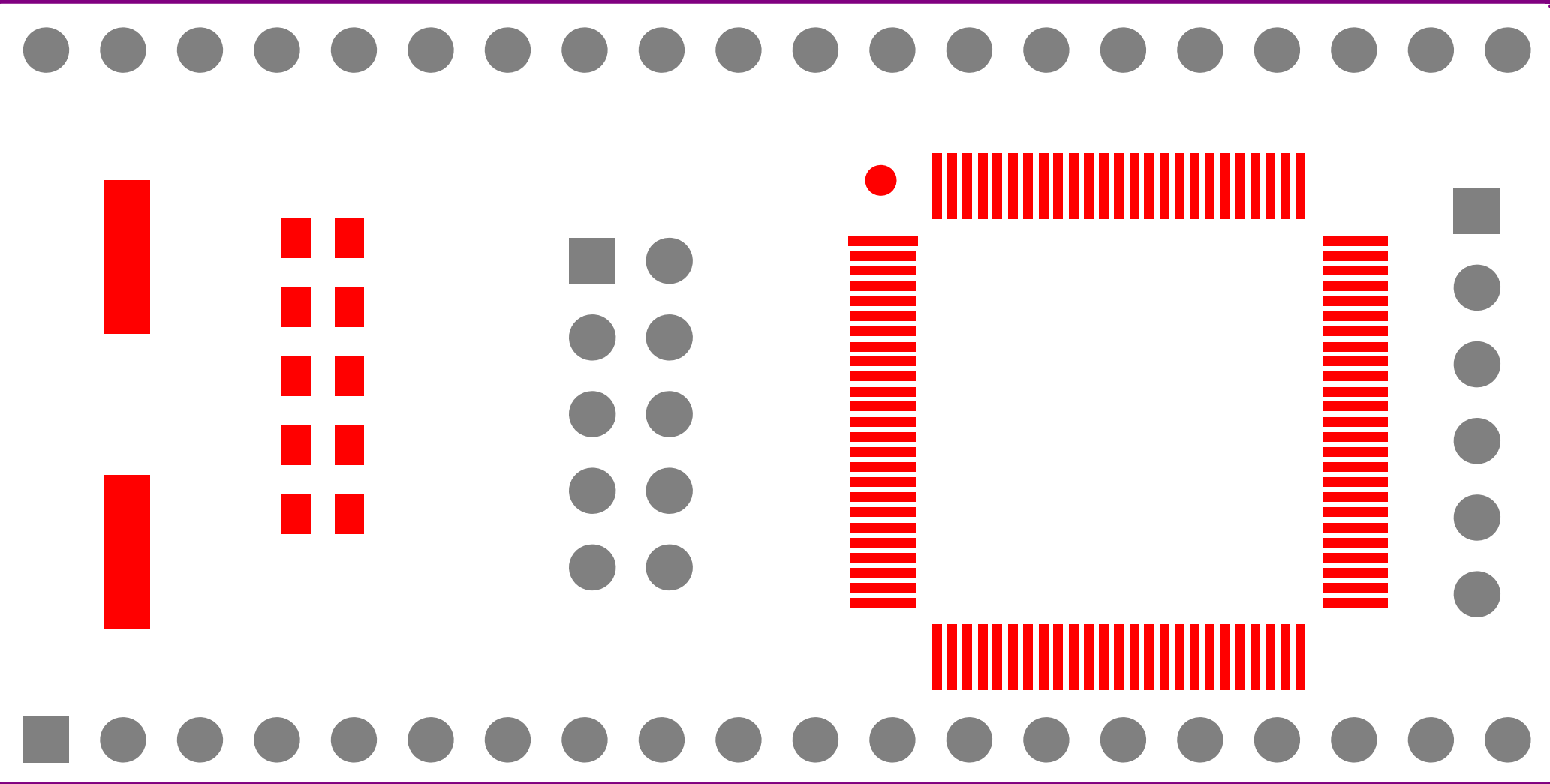


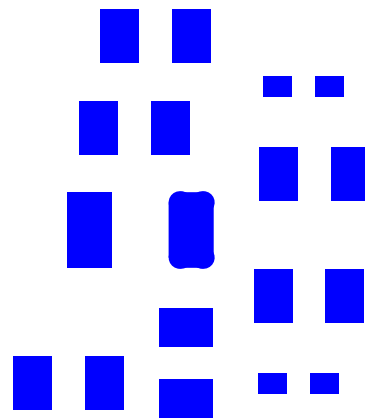
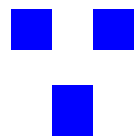
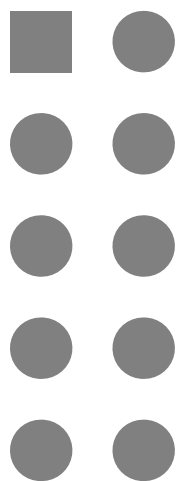
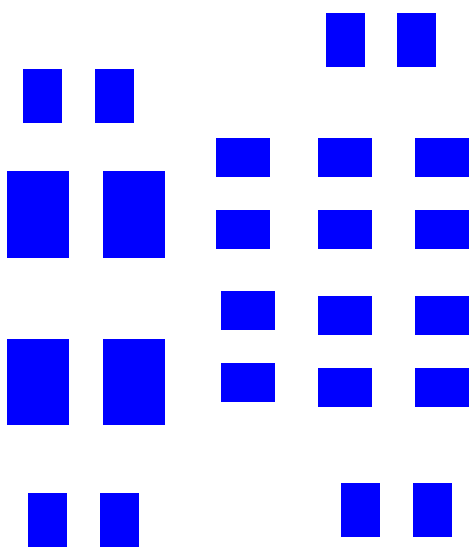


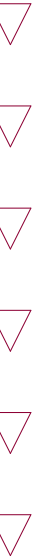
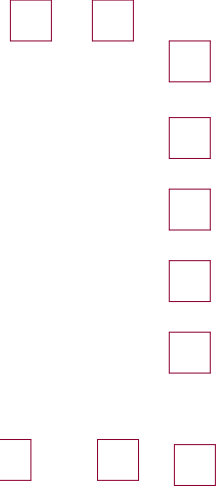
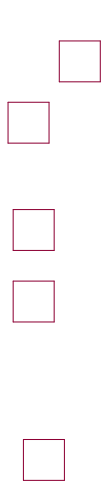
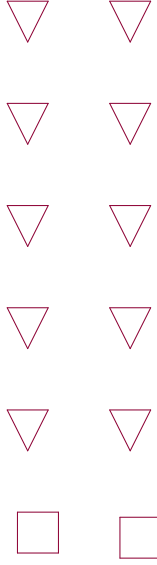
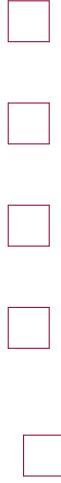
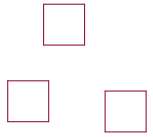
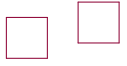












+ +

+ +

+

+ +

+ + +

+ + +

+

+ +

| Comment        | Description                              | Designator         | Footprint            | LibRef          | Quantity |
|----------------|--|--------------------|----------------------|-----------------|----------|
| 0805 0.1uF     |  | C1, C2, C3, C4     | 0805                 | CC_0805         | 4        |
| 0402 0.1pF     |  | C5, C6             | 0402                 | CC_0402         | 2        |
| 0805 1uF       |  | C7, C11            | 0805                 | CC_0805         | 2        |
| 0805 10nF      |  | C8, C12            | 0805                 | CC_0805         | 2        |
| 0805 12pF      |  | C9, C10            | 0805                 | CC_0805         | 2        |
| 0805 18pF      |  | C13, C14           | 0805                 | CC_0805         | 2        |
| ZLLS1000TA     | Schottky Rectifier Low Leakage 1.16A 40V | D2                 | SOT23(ANK)           | ZLLS1000TA      | 1        |
| UART           | Header, 6-Pin, Dual row                  | J1                 | HDR1X6               | HEADER1X6       | 1        |
| HEADER2X5      | Header, 10-Pin, Dual row                 | J2                 | HDR2x5               | HEADER2X5       | 1        |
| BLM21PG221SN1D | Murata's 2A Ferrite 0805                 | L1, L2, L3, L4     | L0805                | BLM21PG221SN1D  | 4        |
| 0805 10K       | 0805                                     | R1, R2, R3, R4, R5 | 0805                 | RC_0805         | 5        |
| LPC1768FBD100  |  | U1                 | TQFP-100             | LPC1768         | 1        |
| MBED           | MBED Socket                              | U2                 | DIP-P40/X1.5         | MBED_Socket     | 1        |
| 32.768KHz      | ECS-327-125-ND                           | Y1                 | XTAL-ECS-327-125-34B | CRYSTAL         | 1        |
| 12MHZ          | Crystal 24 MHz 50 ohm 18pF 50ppm         | Y2                 | XTAL-ABM3B           | ABM3B-24.000MHz | 1        |
| ECS-HC-49USMD  |  | Y3                 | XTAL-HC49SD          | ECS-HC-49USMD   | 1        |
|                |  |                    |                      |                 |          |