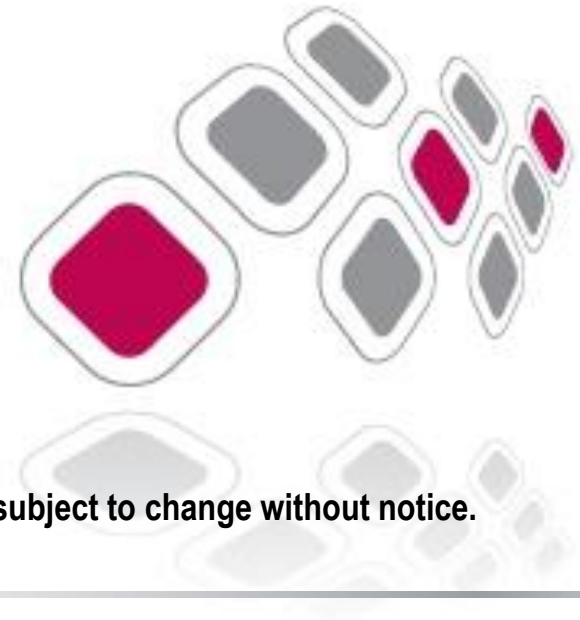


Silica Tusa

NXP CLRC663 Daughter Board for LPCXpresso / mbed Boards



Specifications may contain preliminary information. Specifications are subject to change without notice.

Overview

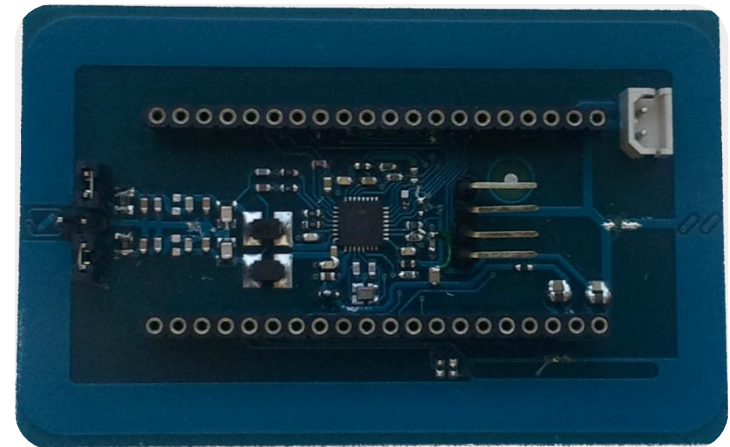
Silica Tusa is a quick, easy, low cost yet effective option to start developing with the new NXP CLRC663 RFID/NFC transceiver IC.

CLRC663 is a highly integrated transceiver IC for contactless communication at 13.56 MHz featuring:

- High Power RF front-end IC operating 3.3 V and 5 V
- Fully ISO/IEC 14443 A & B, ISO/IEC 15693 and FeliCa
- ISO/NFC 18092 NFC-IP1 Peer-to-Peer support (Initiator Mode)
- High Baud Rates (up to 848 kbits)
- Low Power Card Detection

Two software development environments are supported:

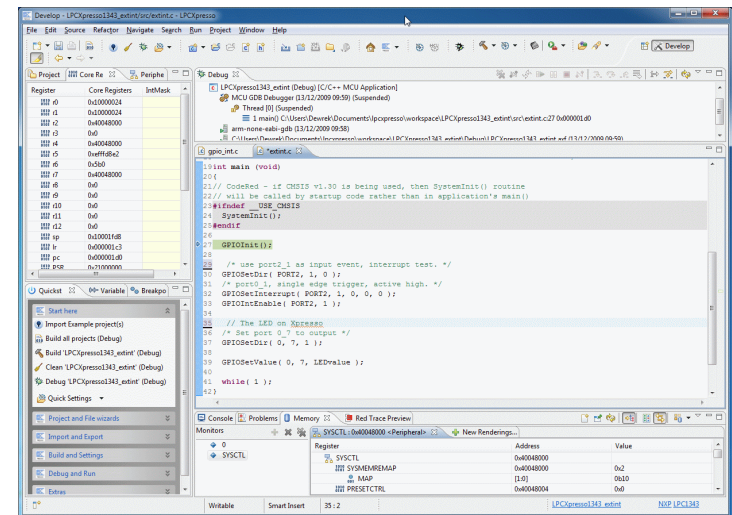
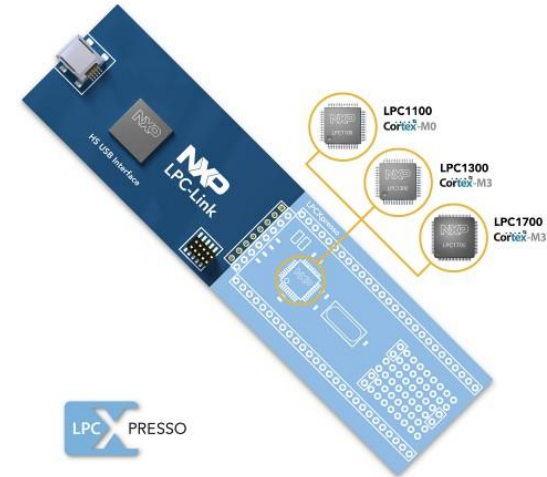
- **NXP LPCXpresso**
- **NXP mbed**



Specifications may contain preliminary information. Specifications are subject to change without notice.

Software Development - LPCXpresso

- LPCXpresso™ is a new, low-cost development platform available from NXP. It supports NXP's ARM-based LPC microcontrollers. The platform is comprised of a simplified Eclipse-based IDE and low-cost target boards which include an attached JTAG debugger.
- The LPCXpresso target boards, jointly developed by NXP, Code Red, and Embedded Artists, include an integrated JTAG debugger, so there's no need for a separate JTAG debug probe.
- The Silica Tusa daughterboard fits on LPCXpresso target boards.
- Software sources are provided as LPCXpresso project files.
- More information on LPCXpresso are available at <http://ics.nxp.com/lpcxpresso/>



Software Development - mbed

- mbed is a tool for Rapid Prototyping with Microcontrollers
- mbed is formed by:
 - mbed microcontrollers, a series of microcontrollers development boards designed for fast, flexible and low-risk and professional rapid prototyping.
 - Packaged as a small 40-pin 0.1" DIP form-factor convenient for prototyping with solderless breadboard, stripboard, and through-hole PCBs.
 - Include a built-in USB programming interface that is as simple as using a USB Flash Drive. Plug it in, drop on an ARM program binary, and its up and running!
 - Online IDE, accessible with browser
 - The mbed Compiler provides a lightweight online C/C++ IDE that is pre-configured to let you quickly write programs and compile and download them to run on your mbed microcontroller.
- Silica Tusa can be attached to mbed microcontrollers to enable development of RFID/NFC application on mbed platform
- More information on mbed is available at <http://mbed.org/handbook/mbed-Compiler>

