

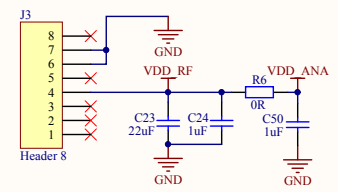
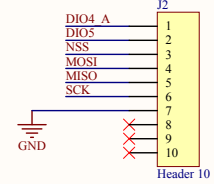
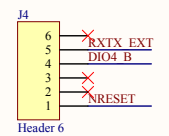
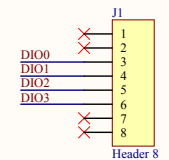
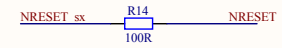
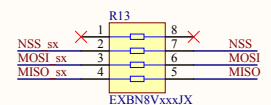
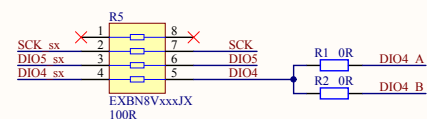
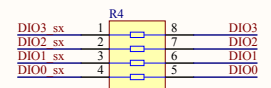
RFO\_LF: +14dBm @ 433MHz

RF Switch LF:

RFO\_HF: +14dBm @ 868MHz

RF Switch HF:

**mbed compatible connectors:**



**SX1276MB1MAS**

Title <b>SX1276 433/868MHz mbed shield</b>		
Size A3	Number <b>PCB_E315V01A - SEMTECH</b>	Revision <b>V1a</b>
Date: 30.07.2014	Sheet of 1/1	
File: \\.\SX1276_e315v01a.SchDoc	Drawn By:EMr	