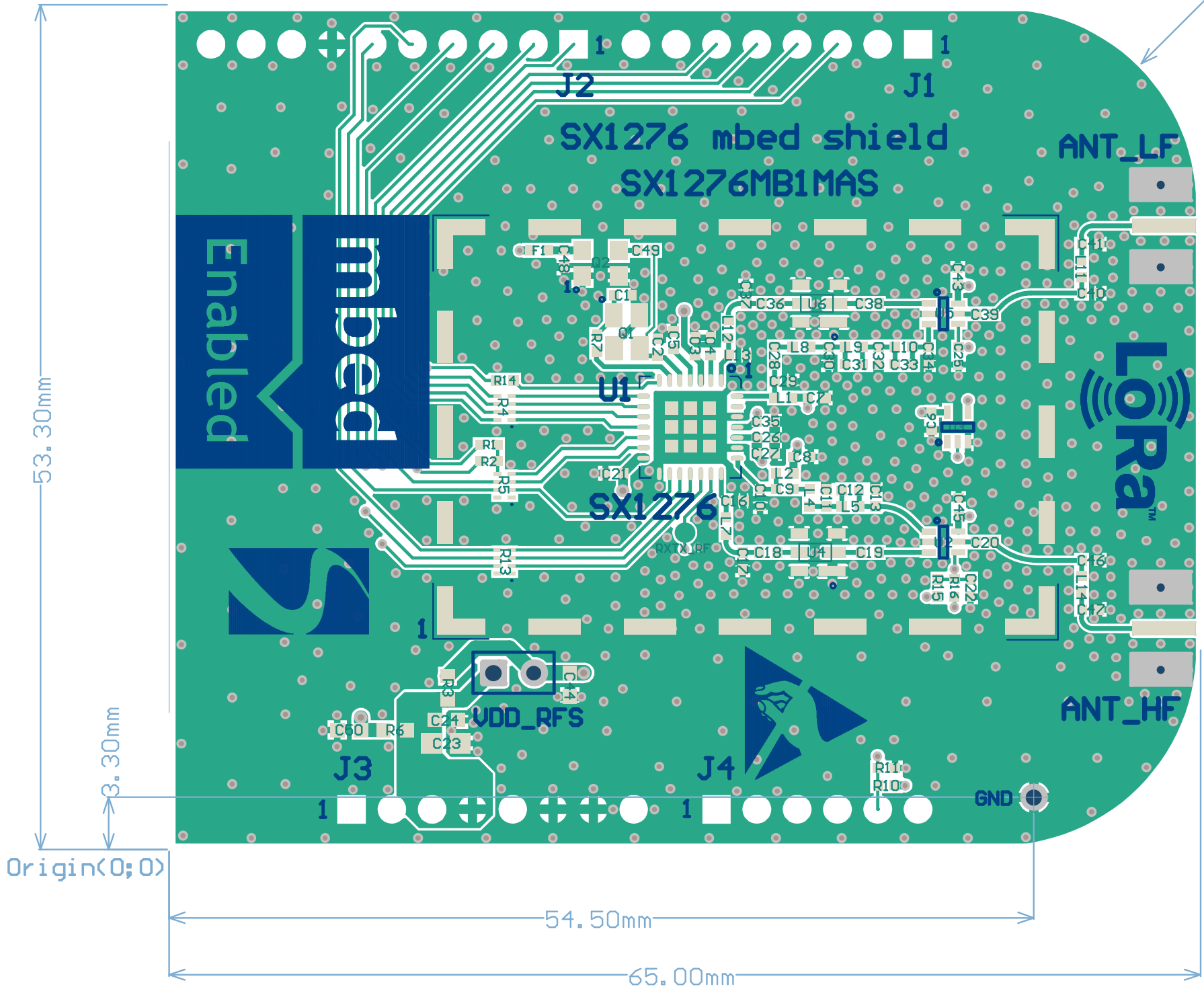


R 12.70mm



53.30mm

3.30mm

Origin(0;0)

54.50mm

65.00mm

SX1276 mbed shield
SX1276MB1MAS

Enabled
mbed

ANT_LF

LORa™

ANT_HF

SX1276

VDD_RFS

GND

Component labels on the PCB:

- J1, J2, J3, J4
- R1, R2, R3, R4, R5, R6, R7, R8, R9, R10, R11, R12, R13, R14, R15, R16
- C1, C2, C3, C4, C5, C6, C7, C8, C9, C10, C11, C12, C13, C14, C15, C16, C17, C18, C19, C20, C21, C22, C23, C24, C25, C26, C27, C28, C29, C30, C31, C32, C33, C34, C35, C36, C37, C38, C39, C40, C41, C42, C43, C44, C45, C46, C47, C48, C49
- L1, L2, L3, L4, L5, L6, L7, L8, L9, L10
- U1, U2, U3, U4, U5, U6
- F1
- IC21
- IC22
- IC23
- IC24
- IC25
- IC26
- IC27
- IC28
- IC29
- IC30
- IC31
- IC32
- IC33
- IC34
- IC35
- IC36
- IC37
- IC38
- IC39
- IC40
- IC41
- IC42
- IC43
- IC44
- IC45
- IC46
- IC47
- IC48
- IC49