

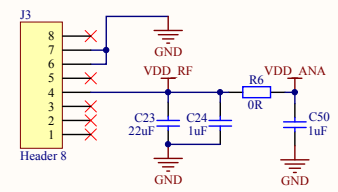
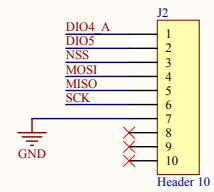
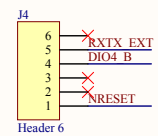
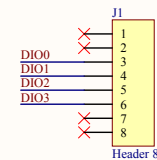
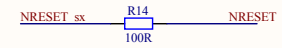
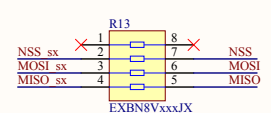
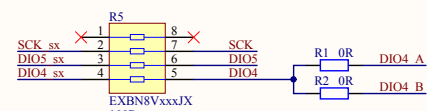
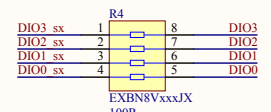
RFO_LF: +14dBm @ 433MHz

RF Switch LF:

PA_Boost_HF: +20dBm @ 915MHz

RF Switch HF:

mbed compatible connectors:



SX1276MB1LAS

Title SX1276 433/915MHz mbed shield		
Size A3	Number PCB_E311V02A - SEMTECH	Revision V1a
Date: 30.07.2014	Sheet of 1/1	
File: \\.\SX1276_e311v02a.SchDoc	Drawn By:EMr	